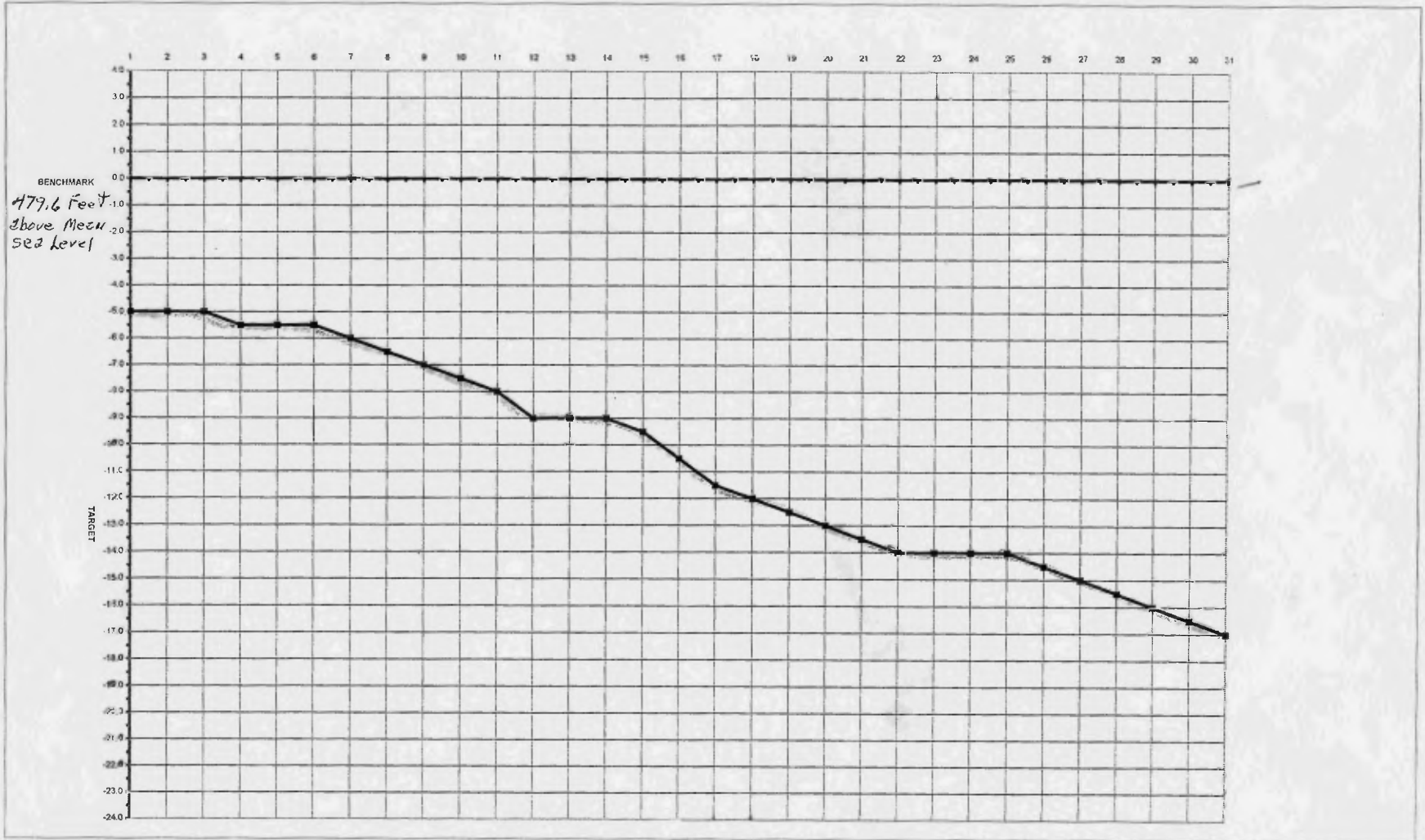


Jan-04 LAKE LEVEL REPORT

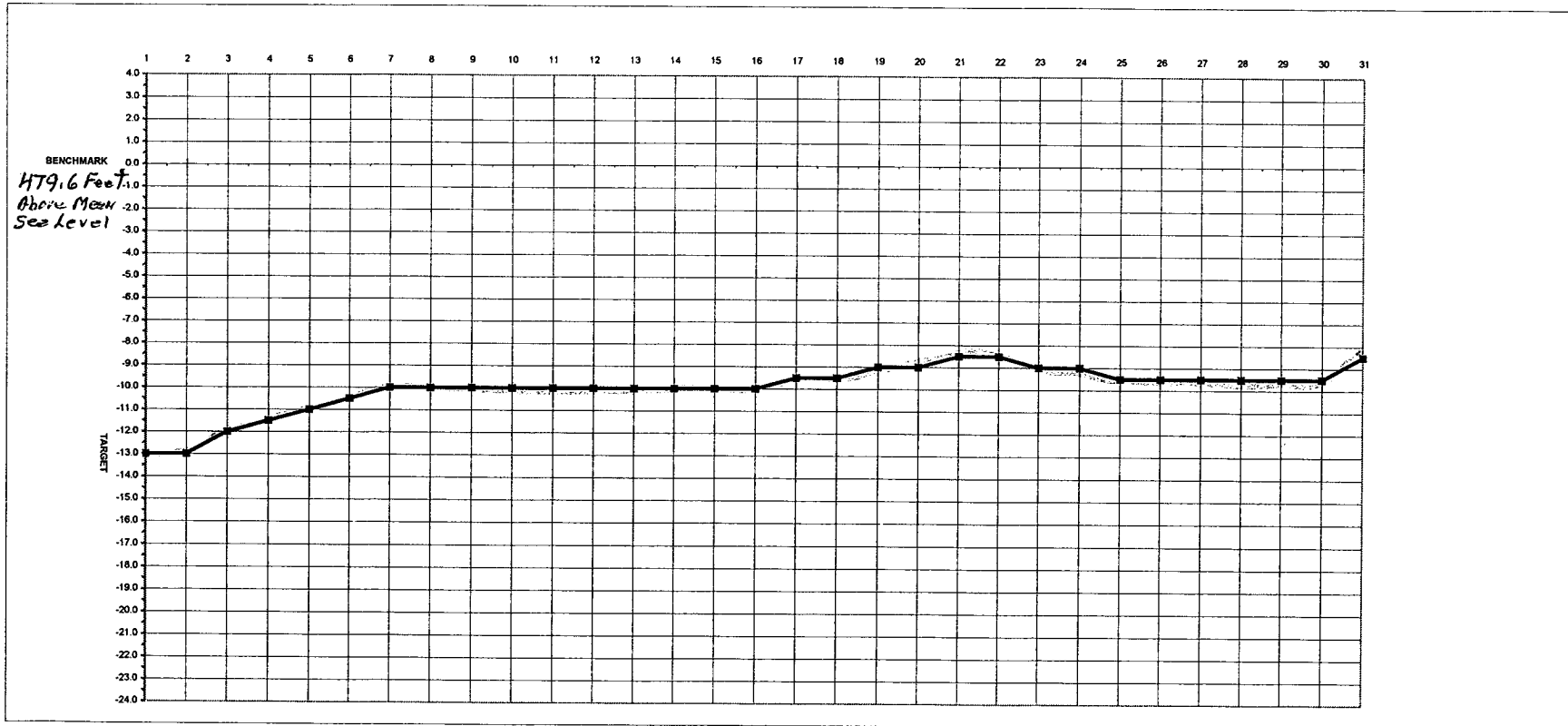
WINPRK

DATE	1 t	2 f	3 s	4 s	5 m	6 t	7 w	8 t	9 f	10 s	11 s	12 m	13 t	14 w	15 t	16 f	17 s	18 s	19 m	20 t	21 w	22 t	23 f	24 s	25 s	26 m	27 t	28 w	29 t	30 f	31 s	
LAKE-L	19	19	19	19	19	19	19	19	19	19	19	19	19	19	19	19	19	19	19	19	14	14	14	14	14	14	14	14	14	14	14	7
LAKE-R	19	19	19	19	19	19	19	19	19	19	19	19	19	19	19	19	19	19	19	19	14	14	14	14	14	14	14	14	14	14	14	7
POND	17	17	17	17	17	17	17	17	17	17	17	17	17	17	17	17	17	17	17	17	12	12	12	12	12	12	12	12	12	12	4	
RAIN			Driz	Rain	Rain							Snow		Snow	Snow			Snow										Snow				
LEVEL	-5.0	-5.0	-5.0	-5.5	-5.5	-5.5	-6.0	-6.5	-7.0	-7.5	-8.0	-8.0	-9.0	-9.0	-9.5	-10.5	-11.5	-12.0	-12.5	-13.0	-13.5	-14.0	-14.0	-14.0	-14.0	-14.0	-14.5	-15.0	-15.5	-16.0	-16.5	-17.0



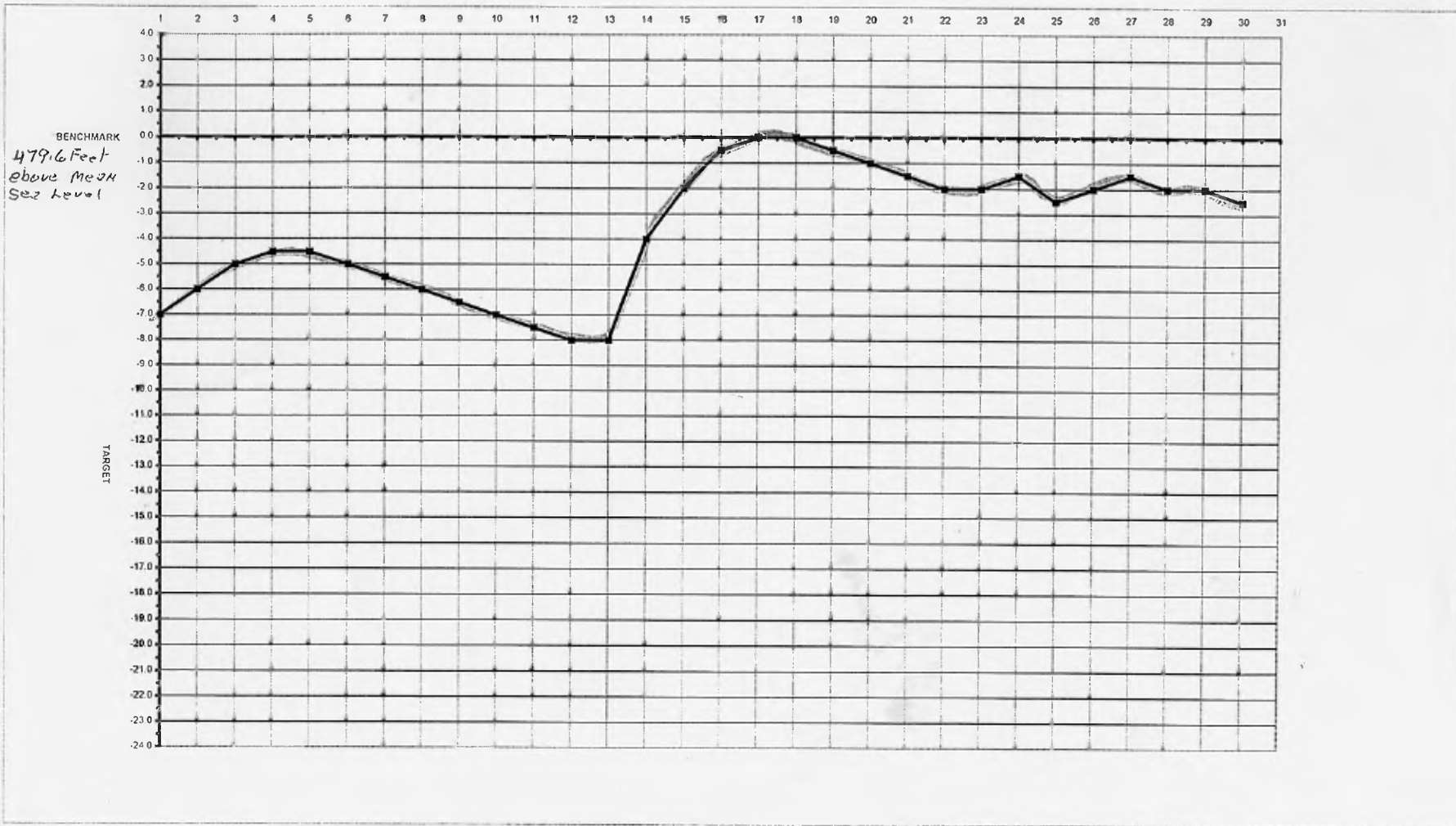
Mar-04 LAKE LEVEL REPORT

DATE	1 m	2 t	3 w	4 t	5 f	6 s	7 s	8 m	9 t	10 w	11 t	12 f	13 s	14 s	15 m	16 t	17 w	18 t	19 f	20 s	21 s	22 m	23 t	24 w	25 t	26 f	27 s	28 s	29 m	30 t	31 w	
LAKE-L	5	5	5	5	5	8	8	8	8	8	8	8	8	8	8	8	8	8	8	8	12	12	12	12	12	12	12	12	12	12	12	16
LAKE-R	5	5	5	5	5	8	8	8	8	8	8	8	8	8	8	8	8	8	8	8	12	12	12	12	12	12	12	12	12	12	12	16
POND	0	0	0	0	0	4	4	4	4	4	4	4	4	4	4	4	4	4	4	4	8	8	8	8	8	8	8	8	8	8	12	
RAIN		0.08	0.07	0.05	0.30	0.05		Snow	Snow			Snow				Snow	Snow	Snow								Lt Rain	0.18	0.11				2.33
LEVEL	-13.0	-13.0	-12.0	-11.5	-11.0	-10.5	-10.0	-10.0	-10.0	-10.0	-10.0	-10.0	-10.0	-10.0	-10.0	-10.0	-9.5	-9.5	-9.0	-9.0	-8.5	-8.5	-9.0	-9.0	-9.5	-9.5	-9.5	-9.5	-9.5	-9.5	-8.5	



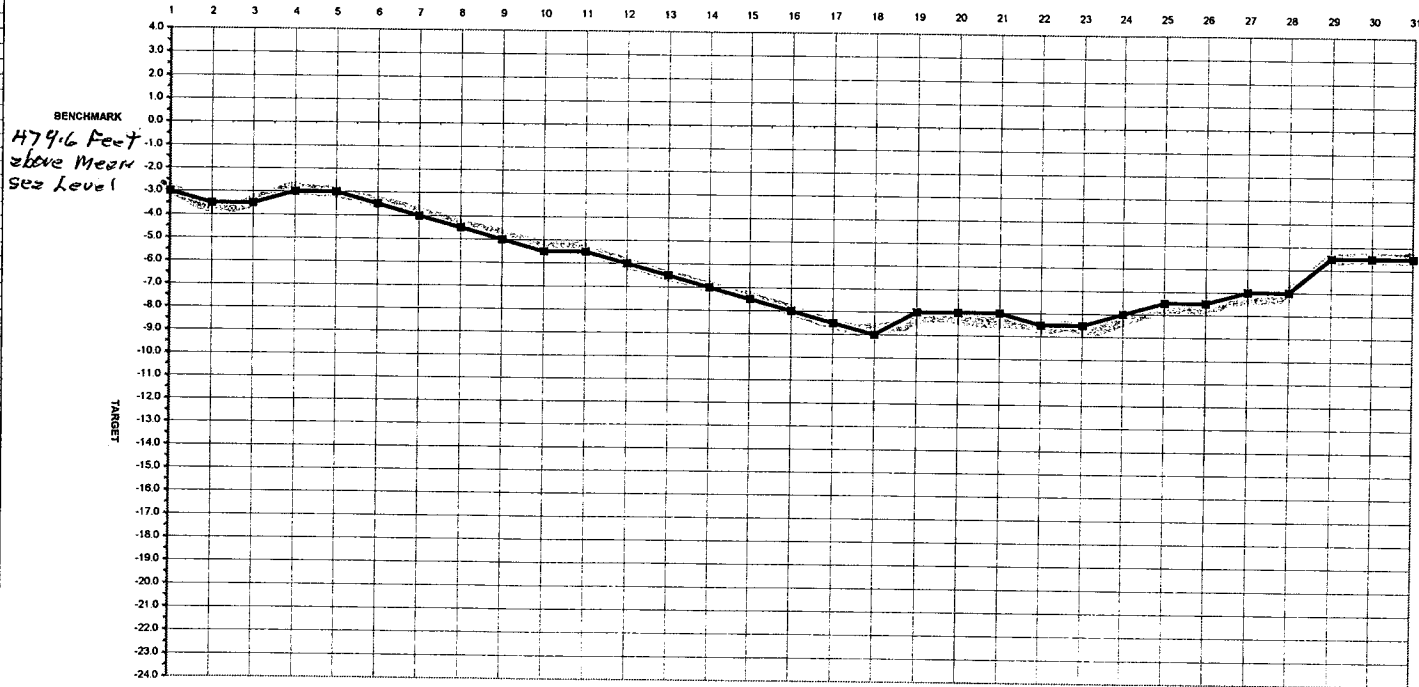
Apr-04 LAKE LEVEL REPORT

DATE	1 t	2 f	3 s	4 s	5 m	6 t	7 w	8 t	9 f	10 s	11 s	12 m	13 t	14 w	15 t	16 f	17 s	18 s	19 m	20 t	21 w	22 t	23 f	24 s	25 s	26 m	27 t	28 w	29 t	30 f
LAKE-L	20	20	20	20	20	20	20	20	20	20	20	20	20	20	20	20	20	20	20	20	20	20	20	20	20	20	20	20	20	20
LAKE-R	20	20	20	20	20	20	20	20	20	20	20	20	20	20	20	20	20	20	20	20	20	20	20	20	20	20	20	20	20	20
POND	16	16	16	16	16	16	16	16	16	16	16	16	16	16	16	16	16	18	16	16	16	16	16	16	16	16	16	16	16	16
RAIN	0.73											0.41	3.23	0.40	0.13							0.51	0.31		0.21	1.04	0.05			
LEVEL	-7.0	-6.0	-5.0	-4.5	-4.5	-5.0	-5.5	-6.0	-6.5	-7.0	-7.5	-8.0	-8.0	-4.0	-2.0	-0.5	0.0	0.0	-0.5	-1.0	-1.5	-2.0	-2.0	-1.5	-2.5	-2.0	-1.5	-2.0	-2.0	-2.5



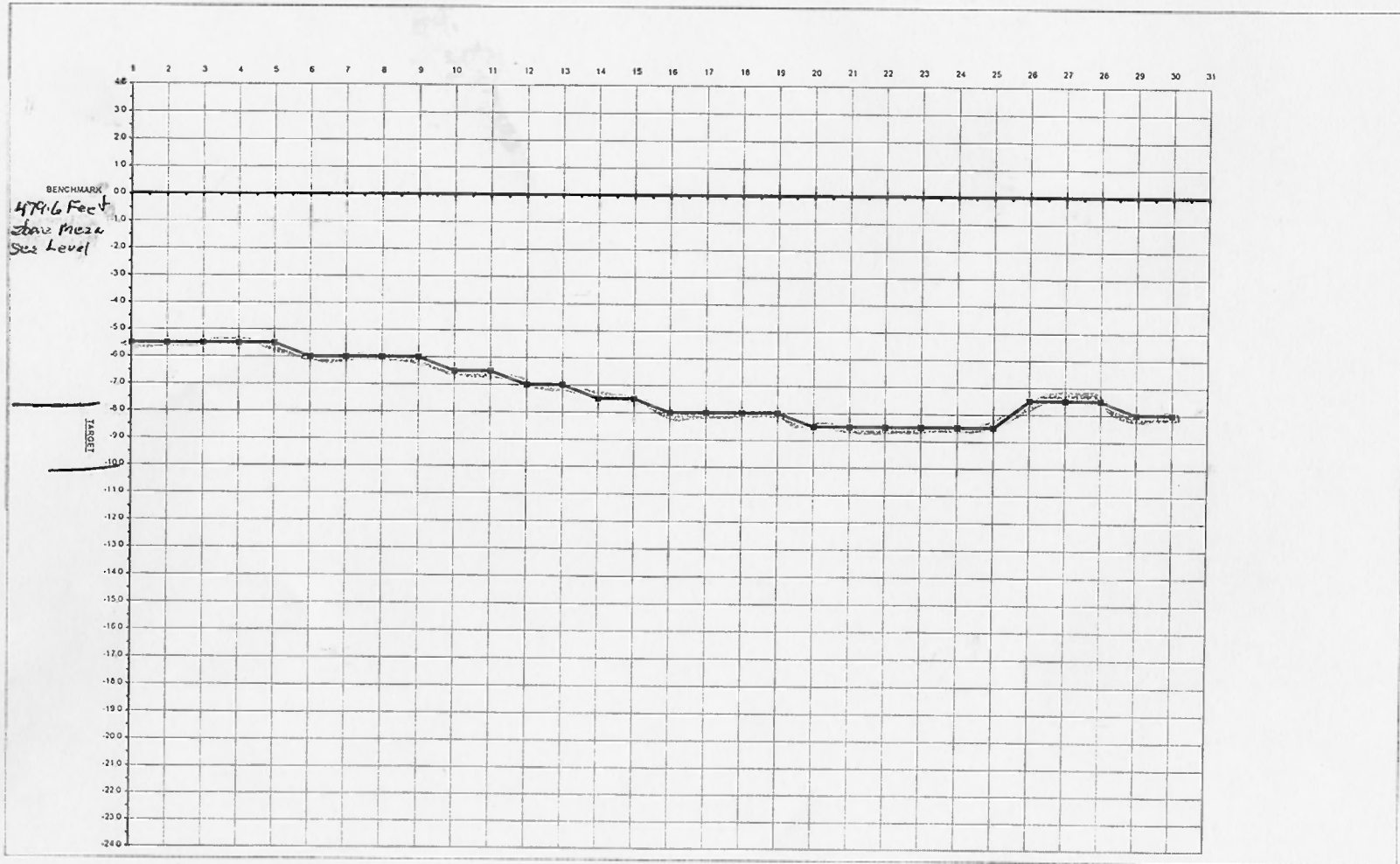
May-04 LAKE LEVEL REPORT

DATE	1 s	2 s	3 m	4 t	5 w	6 t	7 f	8 s	9 s	10 m	11 t	12 w	13 t	14 f	15 s	16 s	17 m	18 t	19 w	20 t	21 f	22 s	23 s	24 m	25 t	26 w	27 t	28 f	29 s	30 s	31 m
LAKE-L	20	20	20	20	20	20	20	20	20	20	20	20	20	20	16	16	12	8	6	6	6	6	6	6	6	6	6	6	6	6	6
LAKE-R	20	20	20	20	20	20	20	20	20	20	20	20	20	20	16	16	12	8	6	6	6	6	6	6	6	6	6	6	6	6	
POND	16	16	16	16	16	16	16	16	16	16	16	16	16	12	12	12	8	4	2	2	2	2	2	2	2	2	2	2	2	2	
RAIN		0.11	1.08						0.40						0.14		0.75		0.07				0.54	0.31		0.41	0.30	1.15		0.21	
LEVEL	-3.0	-3.5	-3.5	-3.0	-3.0	-3.5	-4.0	-4.5	-5.0	-5.5	-5.5	-6.0	-6.5	-7.0	-7.5	-8.0	-8.5	-9.0	-8.0	-8.0	-8.0	-8.5	-8.5	-8.0	-7.5	-7.5	-7.0	-7.0	-5.5	-5.5	-5.5



Jun-04 LAKE LEVEL REPORT

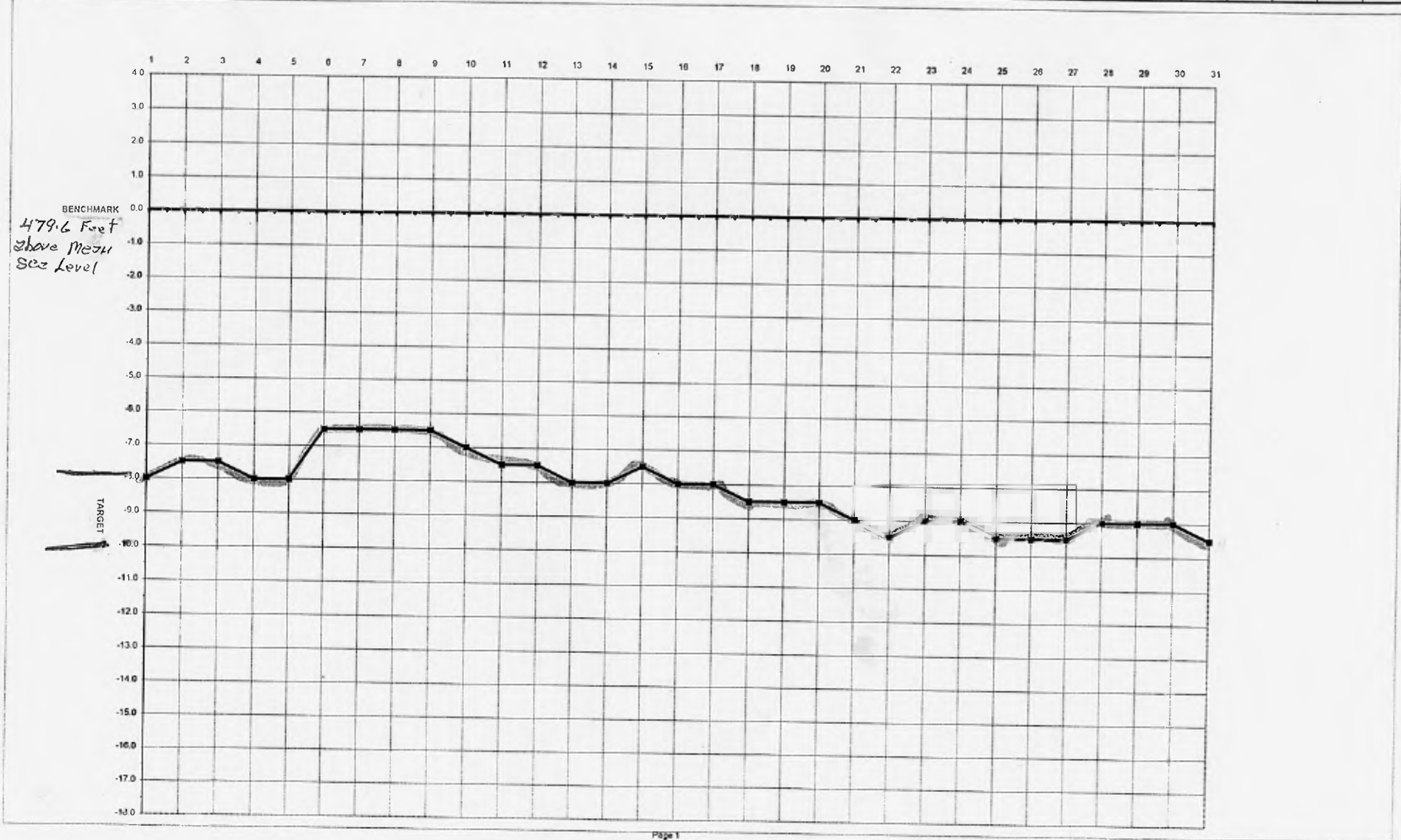
DATE	1 t	2 w	3 t	4 f	5 s	6 s	7 m	8 t	9 w	10 t	11 f	12 s	13 s	14 m	15 t	16 w	17 t	18 f	19 s	20 s	21 m	22 t	23 w	24 t	25 f	26 s	27 s	28 m	29 t	30 w	
LAKE-L	6	6	6	6	6	6	6	6	6	6	6	6	6	6	6	6	6	6	6	4	0	0	0	0	0	0	0	0	0	0	0
LAKE-R	6	6	6	6	6	6	6	6	6	6	6	6	6	6	6	6	6	6	6	4	4	4	4	4	4	4	4	4	4	4	
POND	2	2	2	2	2	2	2	2	2	2	2	2	2	2	2	2	2	2	2	2	0	0	0	0	0	0	0	0	0	0	
RAIN	0.09									0.03	0.04							0.10	0.03							1.08			0.16		
LEVEL	-5.5	-5.5	-5.5	-5.5	-5.5	-6.0	-6.0	-6.0	-6.0	-6.5	-6.5	-7.0	-7.0	-7.5	-7.5	-8.0	-8.0	-8.0	-8.0	-8.5	-8.5	-8.5	-8.5	-8.5	-8.5	-8.5	-7.5	-7.5	-7.5	-8.0	-8.0



JUL 04
Jul-04

LAKE LEVEL REPORT

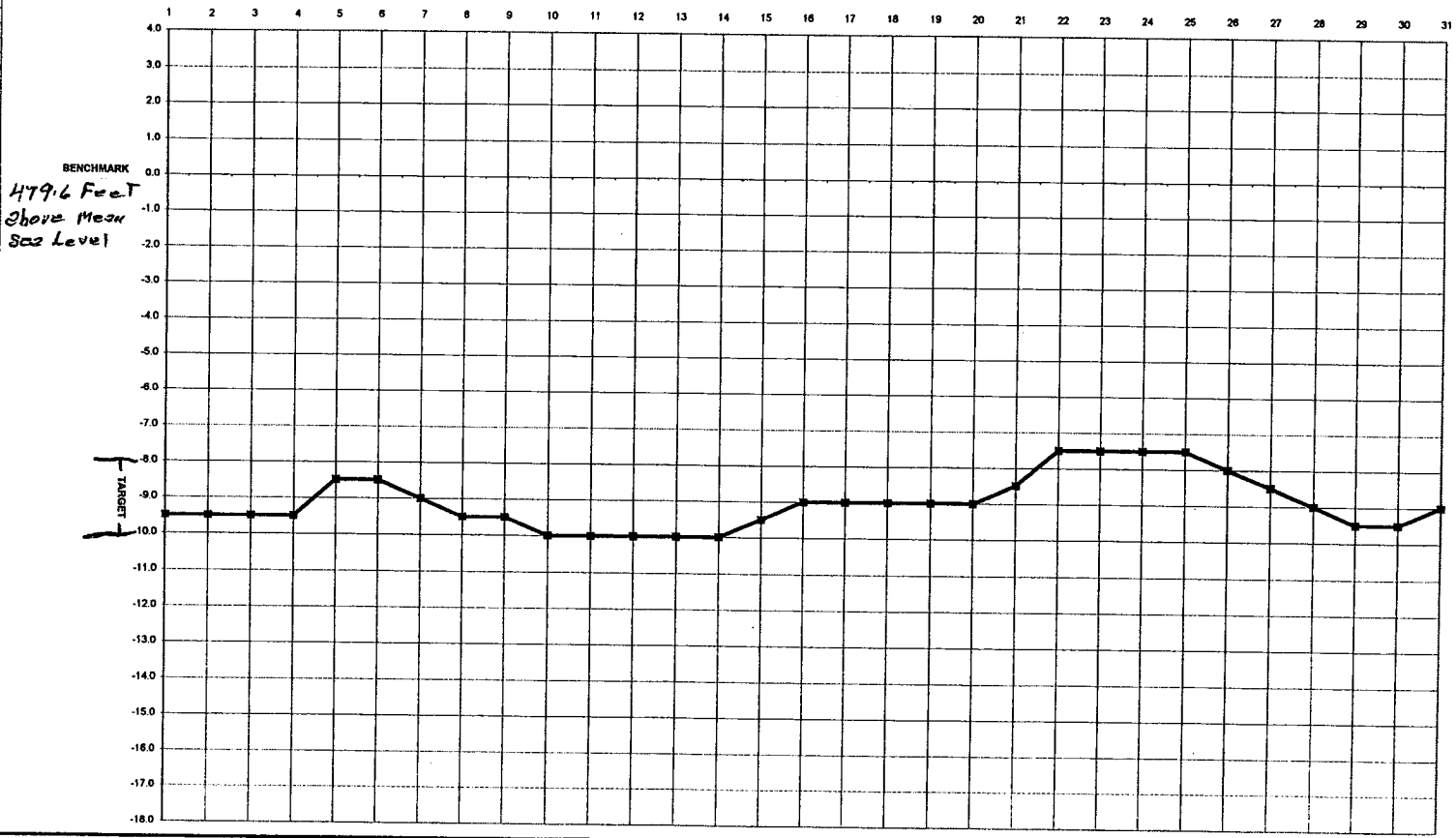
DATE	1 t	2 f	3 s	4 s	5 m	6 t	7 w	8 t	9 f	10 s	11 s	12 m	13 t	14 w	15 t	16 f	17 s	18 s	19 m	20 t	21 w	22 t	23 f	24 s	25 s	26 m	27 t	28 w	29 t	30 f	31 s
LAKE-L	0	0	0	0	0	0	0	0	7	7	7	7	7	7	7	7	7	7	7	7	7	7	7	7	3	0	0	0	0	0	0
LAKE-R	4	4	4	4	4	4	4	4	7	7	7	7	7	7	7	7	7	7	7	7	7	7	7	7	3	3	7	7	7	7	
POND	0	0	0	0	0	0	0	0	4	4	4	4	4	4	4	4	4	4	4	4	4	4	4	4	0	0	0	0	0	0	
RAIN	0.56				0.94								0.47	0.17				0.35	0.06												
LEVEL	-8.0	-7.5	-7.5	-8.0	-8.0	-6.5	-6.5	-6.5	-6.5	-7.0	-7.5	-7.5	-8.0	-8.0	-7.5	-8.0	-8.0	-8.5	-8.5	-8.5	-8.5	-8.0	-9.5	-9.0	-9.0	-9.5	-9.5	-9.5	-9.0	-9.0	-9.0



Aug-04

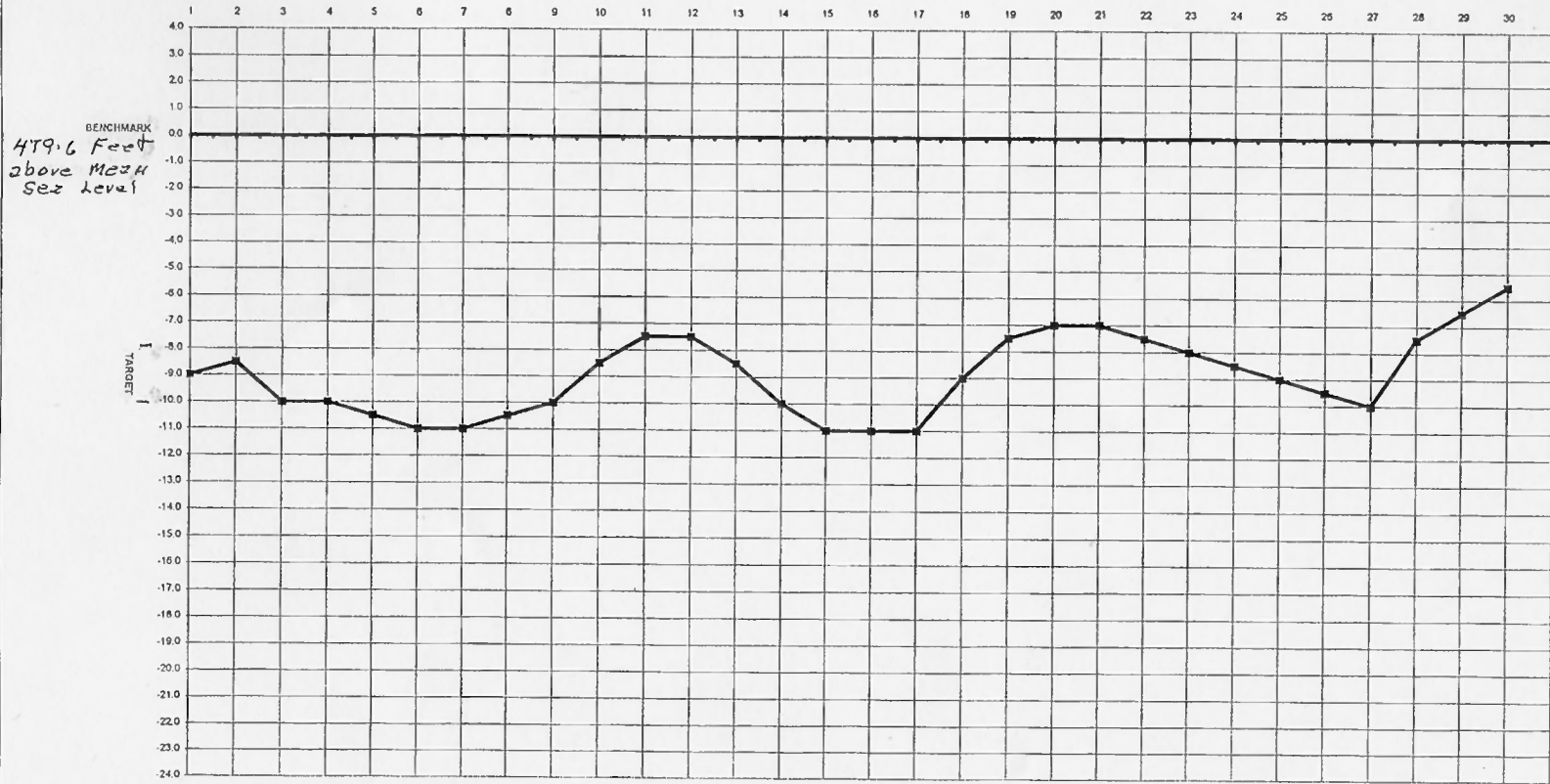
LAKE LEVEL REPORT

DATE	1 s	2 m	3 t	4 w	5 t	6 f	7 s	8 s	9 m	10 t	11 w	12 t	13 f	14 s	15 s	16 m	17 t	18 w	19 t	20 f	21 s	22 s	23 m	24 t	25 w	26 t	27 f	28 s	29 s	30 m	31 t
LAKE-L	0	0	0	0	0	0	0	0	0	0	0	0	0	0	0	0	0	0	0	0	0	0	0	0	0	0	0	0	0	0	0
LAKE-R	7	7	7	7	7	7	7	7	7	4	4	4	4	4	4	4	4	4	4	4	8	8	8	10	10	12	12	8	8	8	8
POND	0	0	0	0	0	0	0	0	0	0	0	0	0	0	0	0	0	0	0	0	0	0	5	5	5	7	7	3	3	3	3
RAIN	0.16			1.03							Rain			1		0.42				0.09	1.74									0.46	
LEVEL	-9.5	-9.5	-9.5	-9.5	-8.5	-8.5	-9.0	-9.5	-9.5	-10.0	-10.0	-10.0	-10.0	-10.0	-9.5	-9.0	-9.0	-9.0	-9.0	-9.0	-8.5	-7.5	-7.5	-7.5	-7.5	-8.0	-8.5	-9.0	-9.5	-9.5	-9.0



Sep-04 LAKE LEVEL REPORT

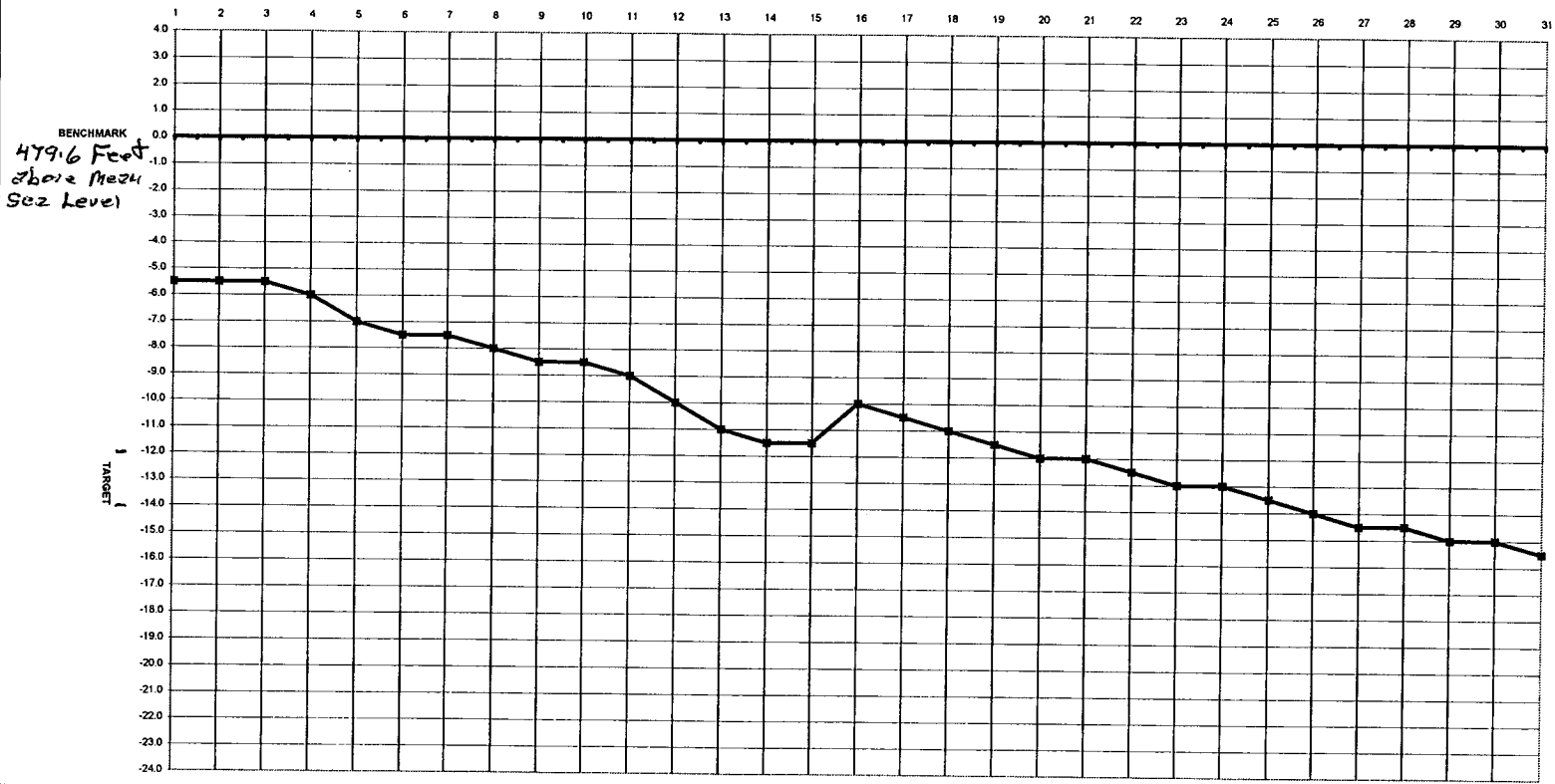
DATE	1w	2t	3f	4s	5s	6m	7t	8w	9t	10f	11s	12s	13m	14t	15w	16t	17f	18s	19s	20m	21t	22w	23t	24f	25s	26s	27m	28t	29w	30t	
LAKE-L	0	0	0	0	0	0	0	0	0	0	0	0	0	0	0	0	0	0	4	4	4	4	4	4	4	4	4	4	4	4	12
LAKE-R	8	6	6	6	6	6	6	6	6	6	6	6	6	6	4	4	4	10	10	10	10	10	10	10	10	10	10	10	10	10	12
POND	3	3	3	3	3	3	3	3	3	3	3	3	3	3	0	0	0	6	8	8	8	8	8	8	8	8	8	8	8	10	
RAIN							0.19	1.08	0.30						0.06	0.17	1.86	1.93													
LEVEL	-9.0	-8.5	-10.0	-10.0	-10.5	-11.0	-11.0	-10.5	-10.0	-8.5	-7.5	-7.5	-8.5	-10.0	-11.0	-11.0	-11.0	-9.0	-7.5	-7.0	-7.0	-7.5	-8.0	-8.5	-9.0	-9.5	-10.0	-7.5	-6.5	-5.5	



Oct-04

LAKE LEVEL REPORT

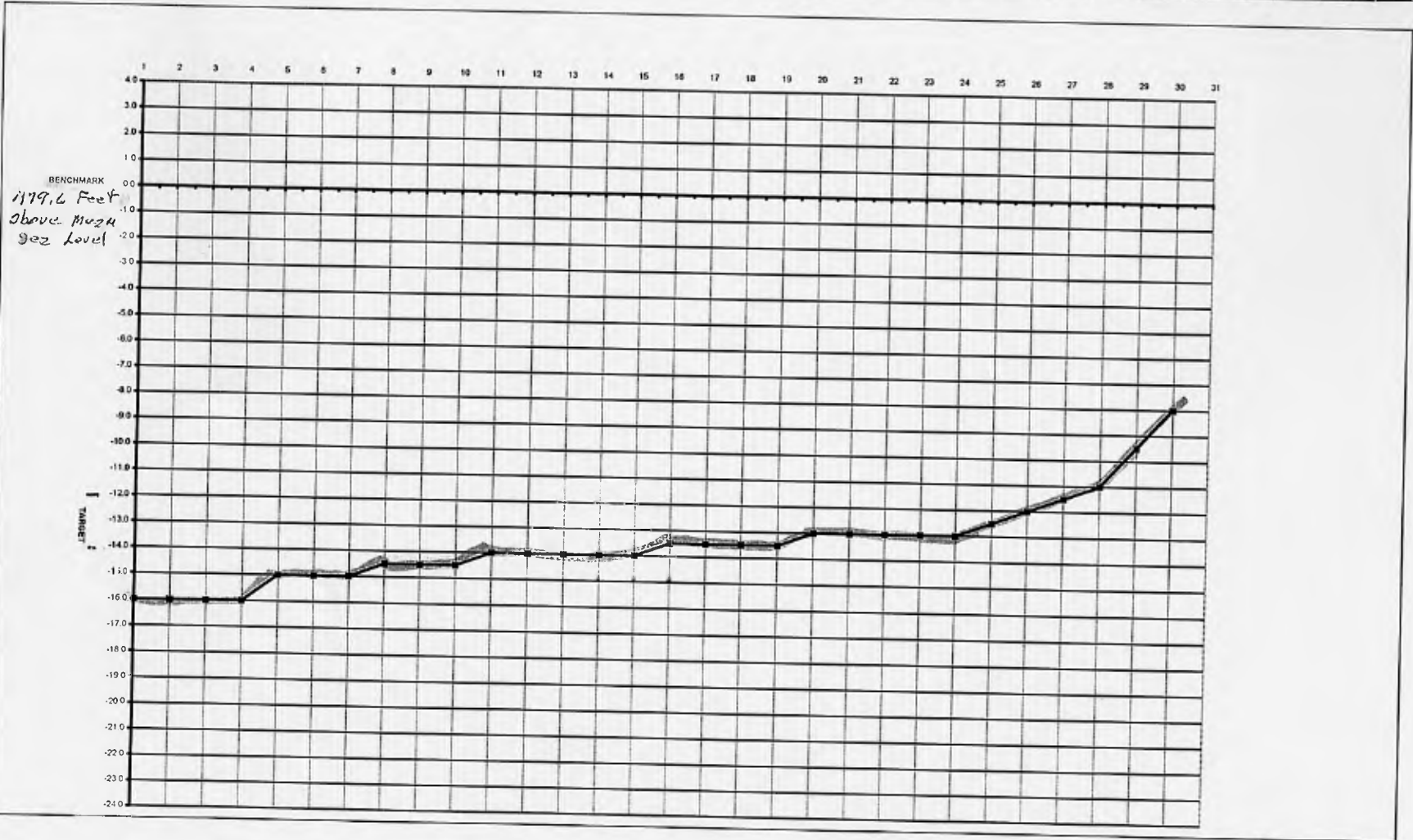
DATE	1 f	2 s	3 s	4 m	5 t	6 w	7 t	8 f	9 s	10 s	11 m	12 t	13 w	14 t	15 f	16 s	17 s	18 m	19 t	20 w	21 t	22 f	23 s	24 s	25 m	ts	27 w	28 t	29 f	30 s	31 s	
LAKE-L	12	12	12	12	12	12	12	12	12	12	12	12	12	12	12	12	12	12	12	12	12	12	12	12	12	12	7	7	7	7	7	
LAKE-R	12	12	12	12	12	12	12	12	12	12	12	12	12	12	12	12	12	12	12	12	12	12	12	12	12	12	7	7	7	7	7	
POND	10	10	10	10	10	10	10	10	10	10	10	10	10	10	10	10	10	10	10	10	10	10	10	10	10	10	10	5	5	5	5	5
RAIN		0.10												0.07	1.03			0.32	0.20													
LEVEL	-5.5	-5.5	-5.5	-6.0	-7.0	-7.5	-7.5	-8.0	-8.5	-8.5	-9.0	-10.0	-11.0	-11.5	-11.5	-10.0	-10.5	-11.0	-11.5	-12.0	-12.0	-12.5	-13.0	-13.0	-13.5	-14.0	-14.5	-14.5	-15.0	-15.0	-15.5	



Nov-04

LAKE LEVEL REPORT

DATE	1 m	2 t	3 w	4 t	5 f	6 s	7 s	8 m	9 t	10 w	11 t	12 f	13 s	14 s	15 m	16 t	17 w	18 t	19 f	20 s	21 s	22 m	23 t	24 w	25 t	26 f	27 s	28 s	29 m	30 t	
LAKE-L	0	0	0	0	0	0	0	0	0	0	0	0	0	0	0	0	0	0	0	0	0	0	0	0	0	0	0	0	0	0	5
LAKE-R	5	5	5	5	4	4	4	4	4	4	4	4	4	4	4	4	4	4	4	4	4	4	4	4	4	4	4	4	8	8	8
POND	0	0	0	0	0	0	0	0	0	0	0	0	0	0	0	0	0	0	0	0	0	0	0	0	0	0	0	0	0	0	0
RAIN		0.05		0.85																											
LEVEL	-16.0	-16.0	-16.0	-16.0	-15.0	-15.0	-15.0	-14.5	-14.5	-14.5	-14.0	-14.0	-14.0	-14.0	-14.0	-13.5	-13.5	-13.5	-13.5	-13.0	-13.0	-13.0	-13.0	-13.0	-12.5	-12.0	-11.5	-11.0	-9.5	-8.0	



Dec-04
LAKE LEVEL REPORT

DATE	1w	2t	3f	4s	5s	6m	7t	8w	9t	10f	11s	12s	13m	14t	15w	16t	17f	18s	19s	20m	21t	22w	23t	24f	25s	26s	27m	28t	29w	30t	31f
LAKE-L	12	12	12	12	12	14	14	14	18	18	18	18	18	18	18	18	20	20	20	20	20	20	20	20	20	20	20	20	20	20	20
LAKE-R	12	12	12	12	12	14	14	14	18	18	18	18	18	18	18	18	20	20	20	20	20	20	20	20	20	20	20	20	20	20	20
POND	7	7	7	7	7	8	8	8	10	10	10	10	10	10	10	10	12	12	12	12	12	12	12	12	12	12	12	12	12	12	
RAIN	0.85						0.75		0.22	0.72			0.09						Snow	Snow				Rain							
LEVEL	-6.5	-6.0	-5.5	-5.5	-6.0	-6.0	-5.5	-5.0	-5.0	-4.5	-4.5	-4.5	-5.0	-5.0	-5.5	-5.5	-6.0	-6.0	-6.5	-6.5	-6.5	-6.5	-6.0	-6.0	-6.0	-6.0	-6.5	-7.0	-7.5	-7.5	

