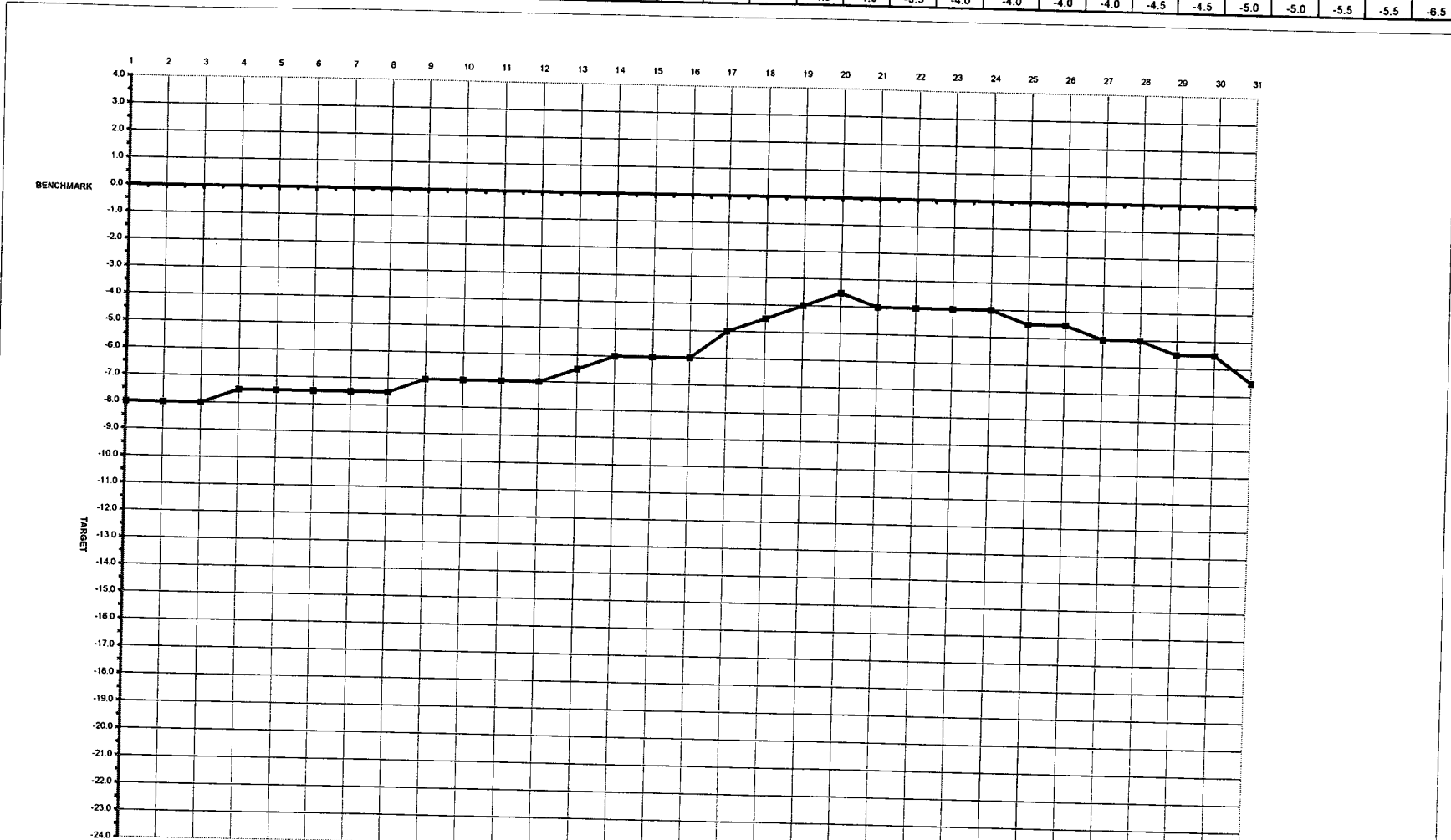


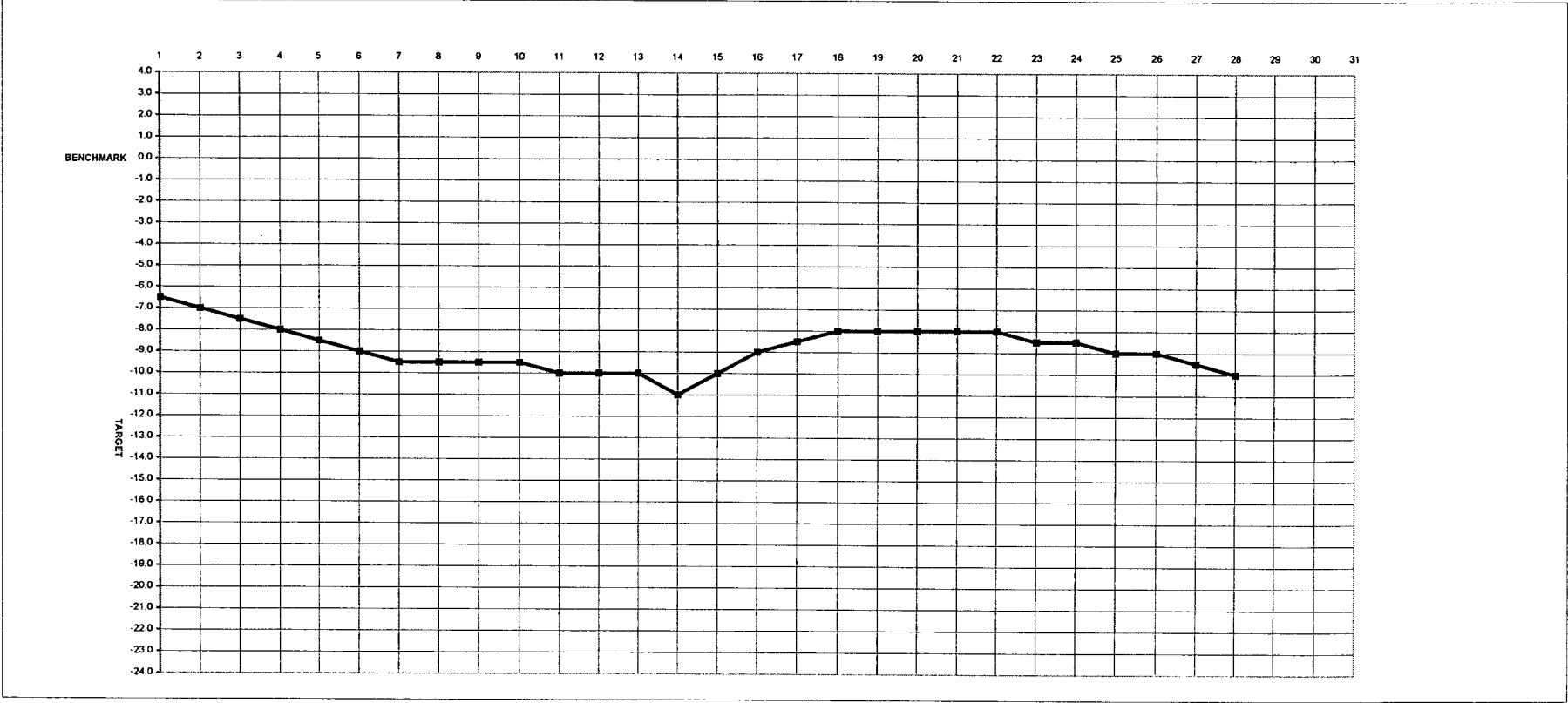
Jan-05 LAKE LEVEL REPORT

DATE	1 s	2 s	3 m	4 t	5 w	6 t	7 f	8 s	9 s	10 m	11 t	12 w	13 t	14 f	15 s	16 s	17 m	18 t	19 w	20 t	21 f	22 s	23 s	24 m	25 t	26 w	27 t	28 f	29 s	30 s	31 m	
LAKE-L	20	20	20	20	20	20	20	20	20	20	20	20	20	20	20	20	20	20	20	20	20	20	20	20	20	20	20	20	20	20	21	
LAKE-R	20	20	20	20	20	20	20	20	20	20	20	20	20	20	20	20	20	20	20	20	20	20	20	20	20	20	20	20	20	20	21	
POND	12	12	12	12	12	12	12	12	12	12	12	12	12	12	12	12	12	12	12	12	12	12	12	12	12	12	12	12	12	12	13	
RAIN			Rain		Snow	Snow		Sleet			Snow	Sleet		Rain										Blizzard		Snow						
LEVEL	-8.0	-8.0	-8.0	-7.5	-7.5	-7.5	-7.5	-7.5	-7.0	-7.0	-7.0	-7.0	-6.5	-6.0	-6.0	-6.0	-5.0	-4.5	-4.0	-3.5	-4.0	-4.0	-4.0	-4.0	-4.0	-4.5	-4.5	-5.0	-5.0	-5.5	-5.5	-6.5



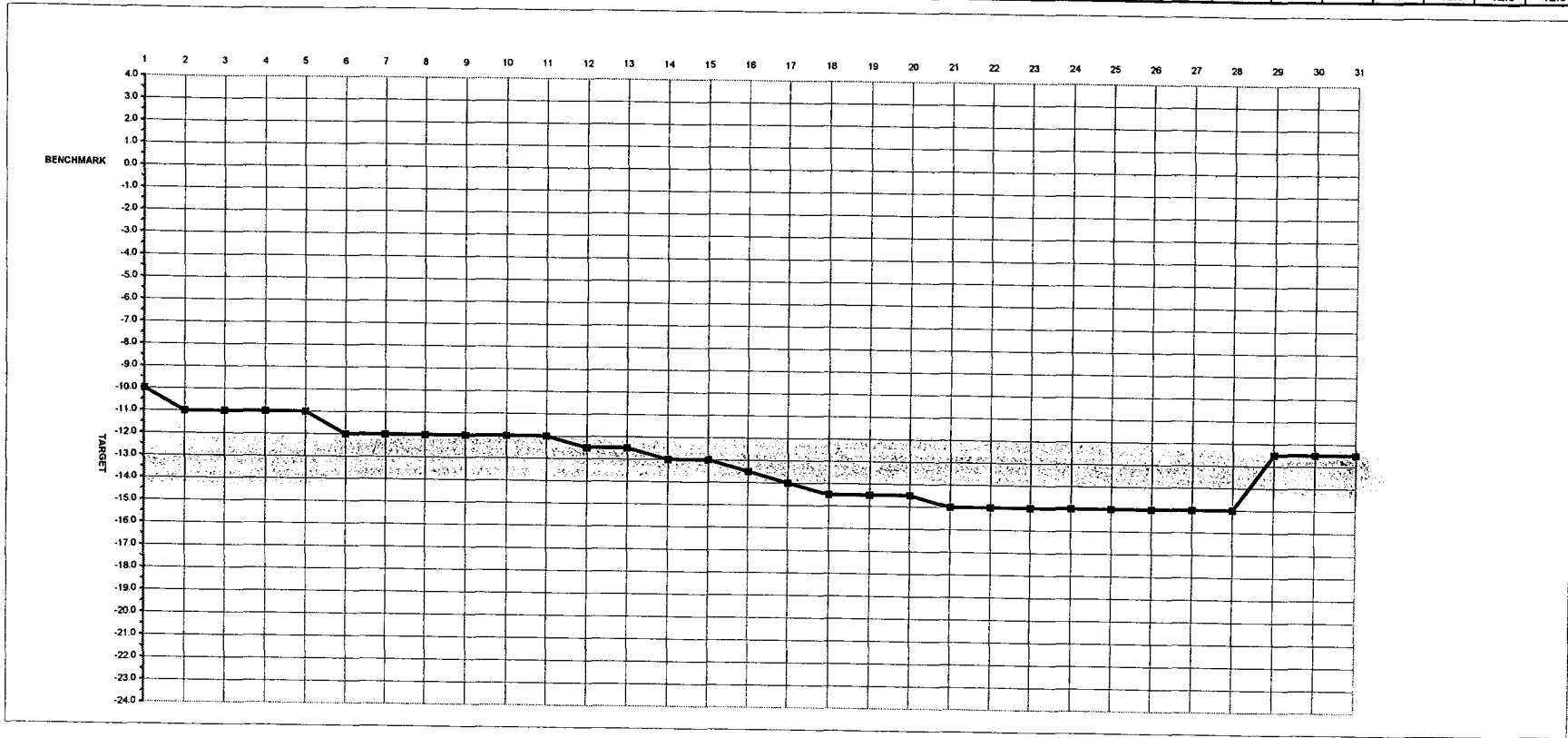
FEB
Feb-05
LAKE LEVEL REPORT

DATE	1 tu	2	3	4	5	6 su	7	8	9	10	11	12	13 su	14	15	16	17	18	19	20 su	21	22	23	24	25	26	27 su	28		
LAKE-L	21	21	21	21	21	21	21	21	21	21	21	21	21	21	21	21	21	21	21	21	21	21	21	21	21	21	21	21		
LAKE-R	21	21	21	21	21	21	21	21	21	21	21	21	21	21	21	21	21	21	21	21	21	21	21	21	21	21	21	21		
POND	13	13	13	13	13	13	13	13	13	13	13	13	13	13	13	13	13	13	13	13	13	13	13	13	13	13	13	13		
RAIN															Rain	Rain						Snow	Snow				Snow			
LEVEL	-6.5	-7.0	-7.5	-8.0	-8.5	-9.0	-9.5	-9.5	-9.5	-9.5	-10.0	-10.0	-10.0	-11.0	-10.0	-9.0	-8.5	-8.0	-8.0	-8.0	-8.0	-8.0	-8.5	-8.5	-9.0	-9.0	-9.5	-10.0		



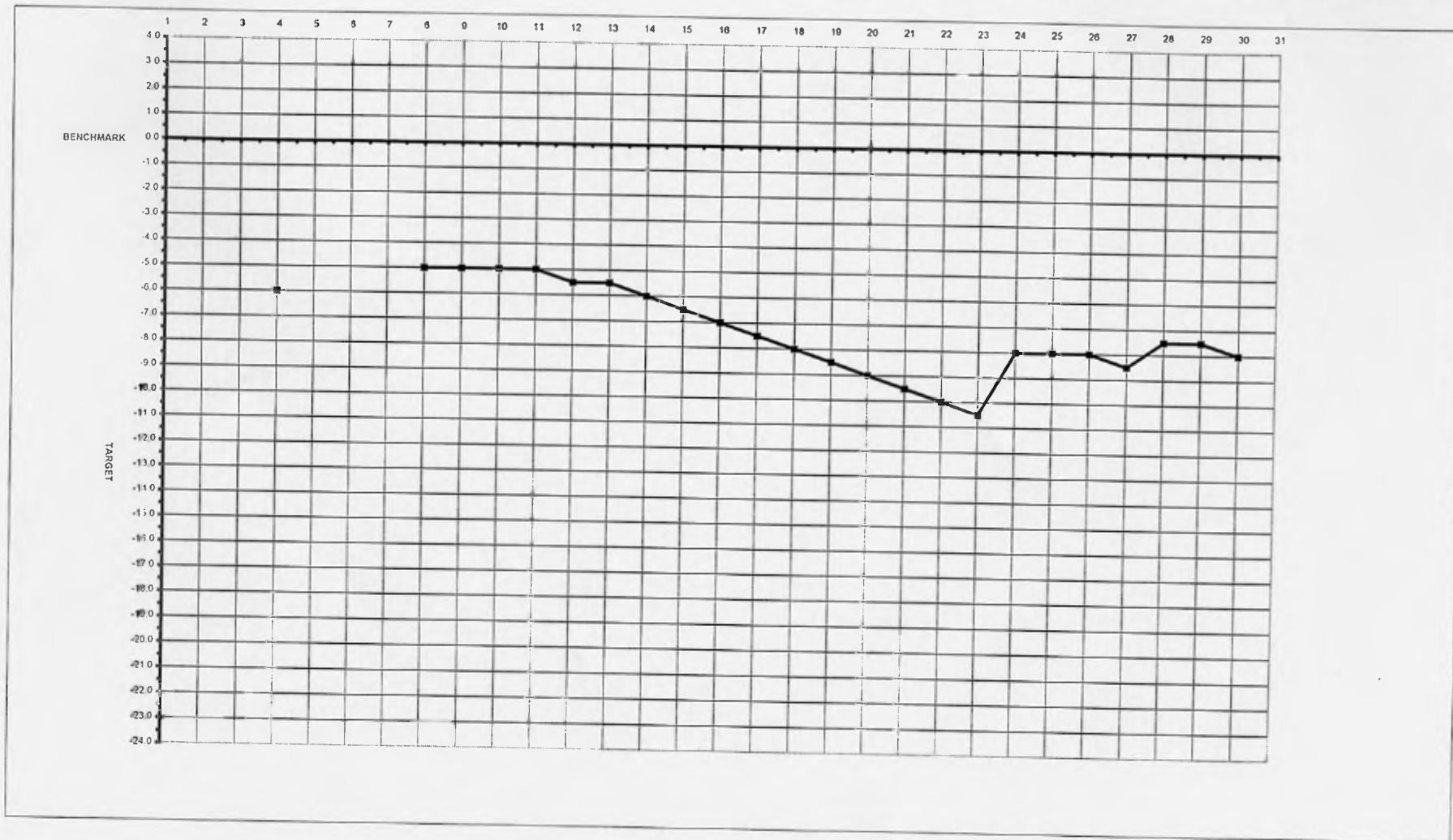
Mar-05 LAKE LEVEL REPORT

DATE	1	2	3	4	5 sa	6 su	7	8	9	10	11	12 sa	13 su	14	15	16	17	18	19 sa	20 su	21	22	23	24	25	26 sa	27 su	28	29	30	31
LAKE-L	21	21	21	21	21	21	21	21	21	21	21	21	21	21	21	21	21	21	21	21	21	21	21	21	21	21	21	21	21	21	
LAKE-R	21	21	21	21	21	21	21	21	21	21	21	21	21	21	21	21	21	21	21	21	21	21	21	21	21	21	21	21	21	21	
POND	13	13	13	13	13	13	13	13	13	13	13	13	13	13	13	13	13	13	13	13	13	13	13	13	13	13	13	13	13	13	
RAIN					Snow			Snow				Snow	Snow									Drizzle		Snow						2.7"	
LEVEL	-10.0	-11.0	-11.0	-11.0	-11.0	-12.0	-12.0	-12.0	-12.0	-12.0	-12.0	-12.5	-12.5	-13.0	-13.0	-13.5	-14.0	-14.5	-14.5	-14.5	-15.0	-15.0	-15.0	-15.0	-15.0	-15.0	-15.0	-15.0	-12.5	-12.5	



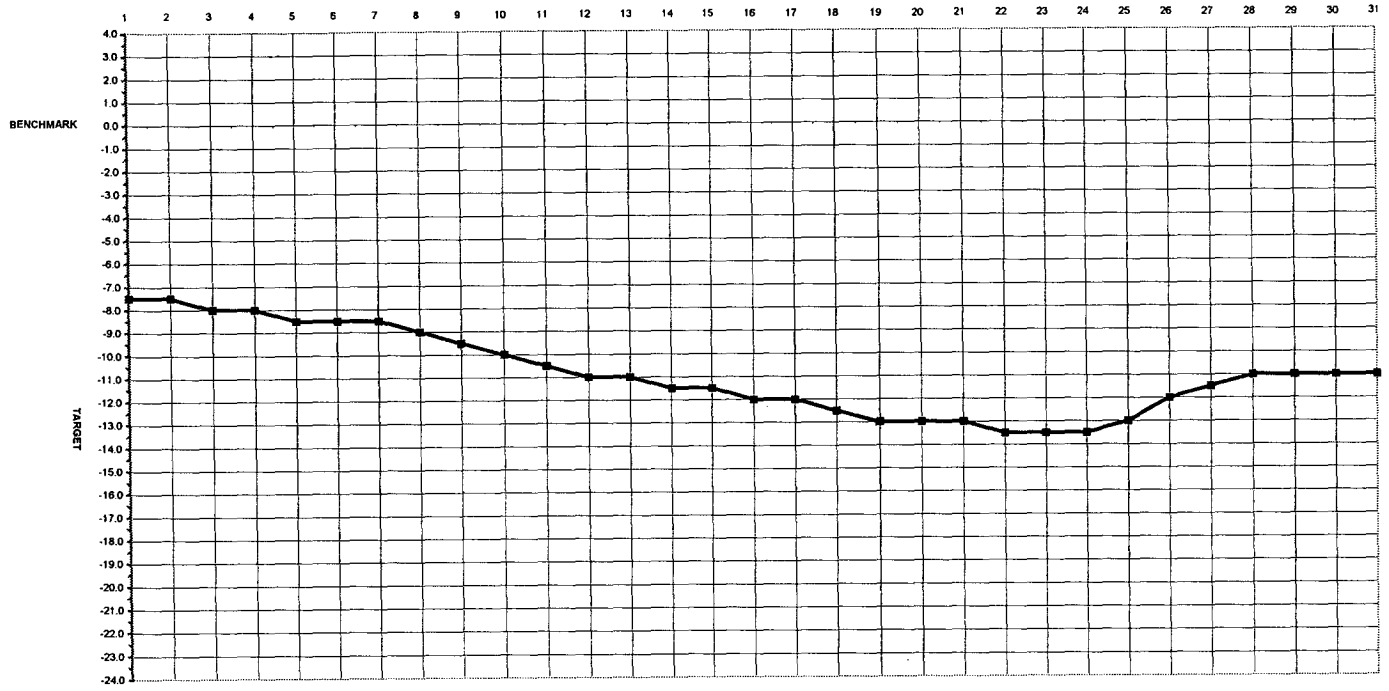
Apr-05 LAKE LEVEL REPORT

DATE	1 f	2 s	3 s	4 m	5 t	6 w	7 t	8 f	9 s	10 s	11 m	12 t	13 w	14 t	15 f	16 s	17 s	18 m	19 t	20 w	21 t	22 f	23 s	24 s	25 m	26 t	27 w	28 t	29 f	30 s
LAKE-I	21	21	21	21	21	21	21	21	21	21	21	21	21	21	21	21	21	21	21	21	21	21	21	21	21	21	21	21	21	21
LAKE-R	21	21	21	21	21	21	21	21	21	21	21	21	21	21	21	21	21	21	21	21	21	21	21	21	21	21	21	21	21	21
POND	13	13	13	13	13	13	13	13	13	13	13	13	13	13	13	13	13	13	13	13	13	13	13	13	13	13	13	13	13	13
RAIN		2.3					0.55														0.16		0.07	Rain	1.78			0.79	0.07	Rain
LEVEL				-6.0				-5.0	-5.0	-5.0	-5.0	-5.5	-5.5	-6.0	-6.5	-7.0	-7.5	-8.0	-8.5	-9.0	-9.5	-10.0	-10.5	-8.0	-8.0	-8.0	-8.5	-7.5	-7.5	-8.0



May-05 LAKE LEVEL REPORT

DATE	1 s	2 m	3 t	4 w	5 t	6 ft	7 s	8 s	9 m	10 t	11 w	12 t	13 f	14 s	15 s	16 m	17 t	18 w	19 t	20 f	21 s	22 s	23 m	24 t	25 w	26 t	27 f	28 s	29 s	30 m	31 t
LAKE-L	21	21	21	21	21	24	24	24	24	24	24	20	18	18	18	18	18	13	10	10	10	10	10	10	10	10	10	10	10	10	10
LAKE-R	21	21	21	21	21	24	24	24	24	24	24	20	18	18	18	18	18	13	10	10	10	10	10	10	10	10	10	10	10	10	
POND	13	13	13	13	13	16	16	16	16	16	16	12	10	10	10	10	10	10	6	6	6	6	6	6	6	6	6	6	6	6	
RAIN	0.47	0.15					0.82								0.07			0.03					0.14	0.30	0.65	0.92	0.09	0.37		0.08	0.05
LEVEL	-7.5	-7.5	-8.0	-8.0	-8.5	-8.5	-8.5	-9.0	-9.5	-10.0	-10.5	-11.0	-11.0	-11.5	-11.5	-12.0	-12.0	-12.5	-13.0	-13.0	-13.0	-13.5	-13.5	-13.5	-13.0	-12.0	-11.5	-11.0	-11.0	-11.0	



Jun-05 LAKE LEVEL REPORT

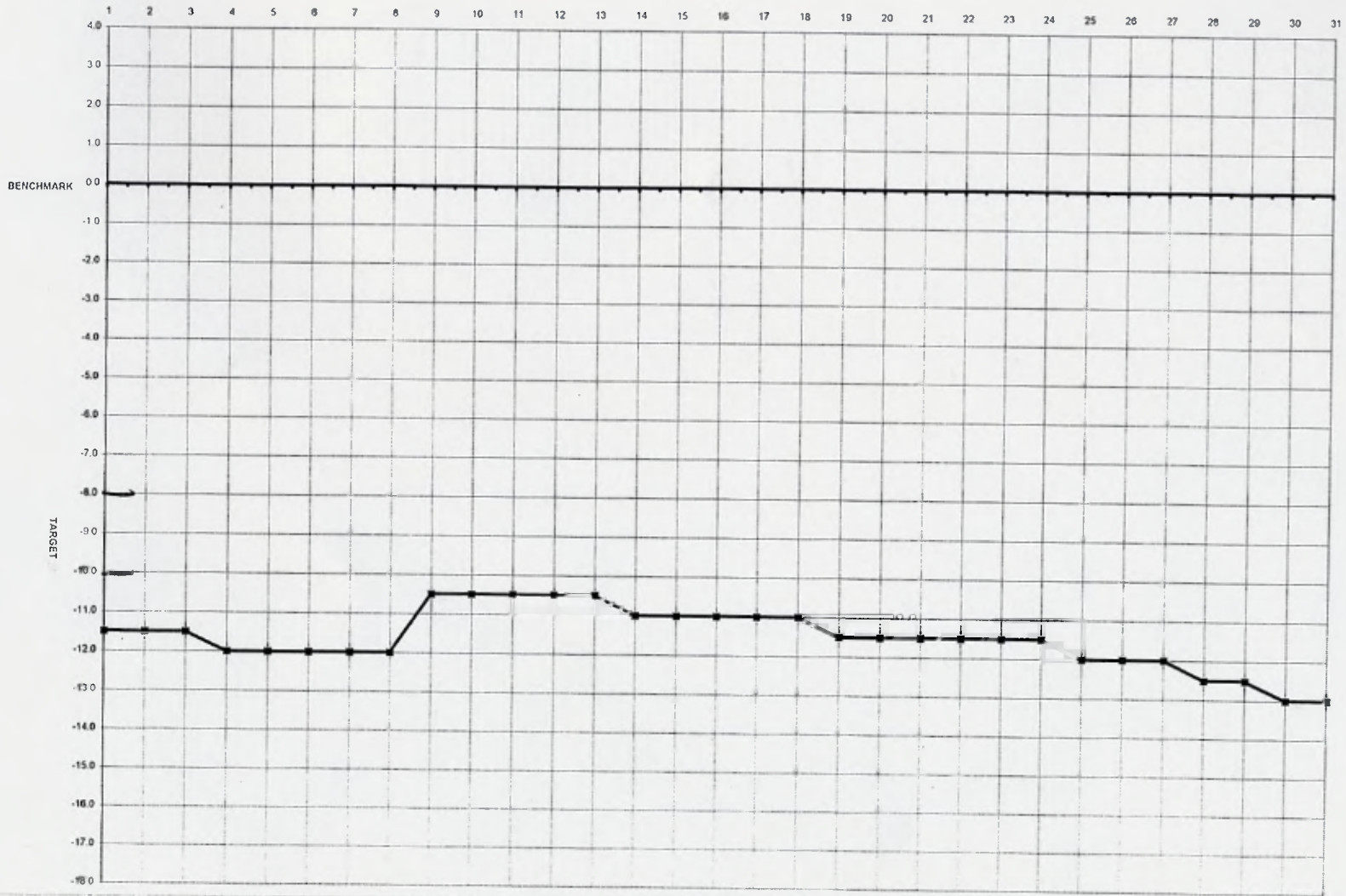
DATE	1 w	2 t	3 f	4 s	5 s	6 m	7 t	8 w	9 t	10 f	11 s	12 s	13 m	14 t	15 w	16 t	17 f	18 s	19 s	20 m	21 t	22 w	23 t	24 f	25 s	26 s	27 m	28 t	29 w	30 t
LAKE-L	10	10	10	10	10	10	2	0	0	0	0	0	0	0	0	0	0	0	0	0	0	0	0	0	0	0	0	0	0	0
LAKE-R	10	10	10	10	10	10	6	6	4	4	4	4	4	4	4	3.5	3.5	3.5	3.5	2.5	2	2	2	2	2	2	2	2	2	
POND	6	6	6	6	6	6	0	0	0	0	0	0	0	0	0	0	0	0	0	0	0	0	0	0	0	0	0	0	0	
RAIN												0.05	0.10		0.51							0.10								
LEVEL	-11.0	-11.0	-11.0	-11.5	-11.5	-12.0	-12.0	-12.0	-12.0	-12.0	-12.0	-12.0	-12.0	-12.0	-12.0	-12.0	-11.5	-11.5	-12.0	-12.0	-12.0	-12.0	-12.0	-12.5	-12.5	-12.5	-12.5	-12.5	-12.0	-12.0



JUL 05
Jul-05

LAKE LEVEL REPORT

DATE	1 f	2 s	3 s	4 m	5 t	6 w	7 t	8 f	9 s	10 s	11 m	12 t	13 w	14 t	15 f	16 s	17 s	18 m	19 t	20 w	21 t	22 f	23 s	24 s	25 m	26 t	27 w	28 t	29 f	30 s	31 s
LAKE-L	0	0	0	0	0	0	0	0	0	0	0	0	0	0	0	0	0	0	0	0	0	0	0	0	0	0	0	0	0	0	0
LAKE-R	2	2	2	2	2	2	2	2	2	2	2	2	2	2	2	2	2	2	2	2	2	2	2	2	2	2	2	2	2	2	2
POND	0	0	0	0	0	0	0	0	0	0	0	0	0	0	0	0	0	0	0	0	0	0	0	0	0	0	0	0	0	0	0
RAIN						0.45		1.65	0.21										0.20			0.09									
LEVEL	-11.5	-11.5	-11.5	-12.0	-12.0	-12.0	-12.0	-12.0	-10.5	-10.5	-10.5	-10.5	-10.5	-11.0	-11.0	-11.0	-11.0	-11.0	-11.5	-11.5	-11.5	-11.5	-11.5	-11.5	-12.0	-12.0	-12.0	-12.5	-12.5	-13.0	-13.0



Aug-05

LAKE LEVEL REPORT

DATE	1 m	2 t	3 w	4 t	5 f	6 s	7 s	8 m	9 t	10 w	11 t	12 f	13 s	14 s	15 m	16 t	17 w	18 t	19 f	20 s	21 s	22 m	23 t	24 w	25 t	26 f	27 s	28 s	29 m	30 t	31 w
LAKE-L	0	0	0	0	0	0	0	0	0	0	0	0	0	0	0	0	0	0	0	0	0	0	0	0	0	0	0	0	0	0	0
LAKE-R	2	2	2	2	2	2	2	2	2	2	2	2	2	2	2	2	2	2	2	2	2	2	2	2	2	2	2	2	2	2	2
POND	0	0	0	0	0	0	0	0	0	0	0	0	0	0	0	0	0	0	0	0	0	0	0	0	0	0	0	0	0	0	0
RAIN					Rain									2.06	0.12						0.50			0.04							
LEVEL	-13.5	-13.5	-13.5	-13.5	-13.5	-13.5	-13.5	-13.5	-13.5	-13.5	-13.5	-13.5	-13.5	-13.5	-13.0	-13.0	-13.0	-13.0	-13.0	-13.0	-13.0	-13.0	-13.0	-13.0	-13.0	-13.0	-13.0	-13.0	-13.0	-13.5	-13.5



Sep-05 LAKE LEVEL REPORT

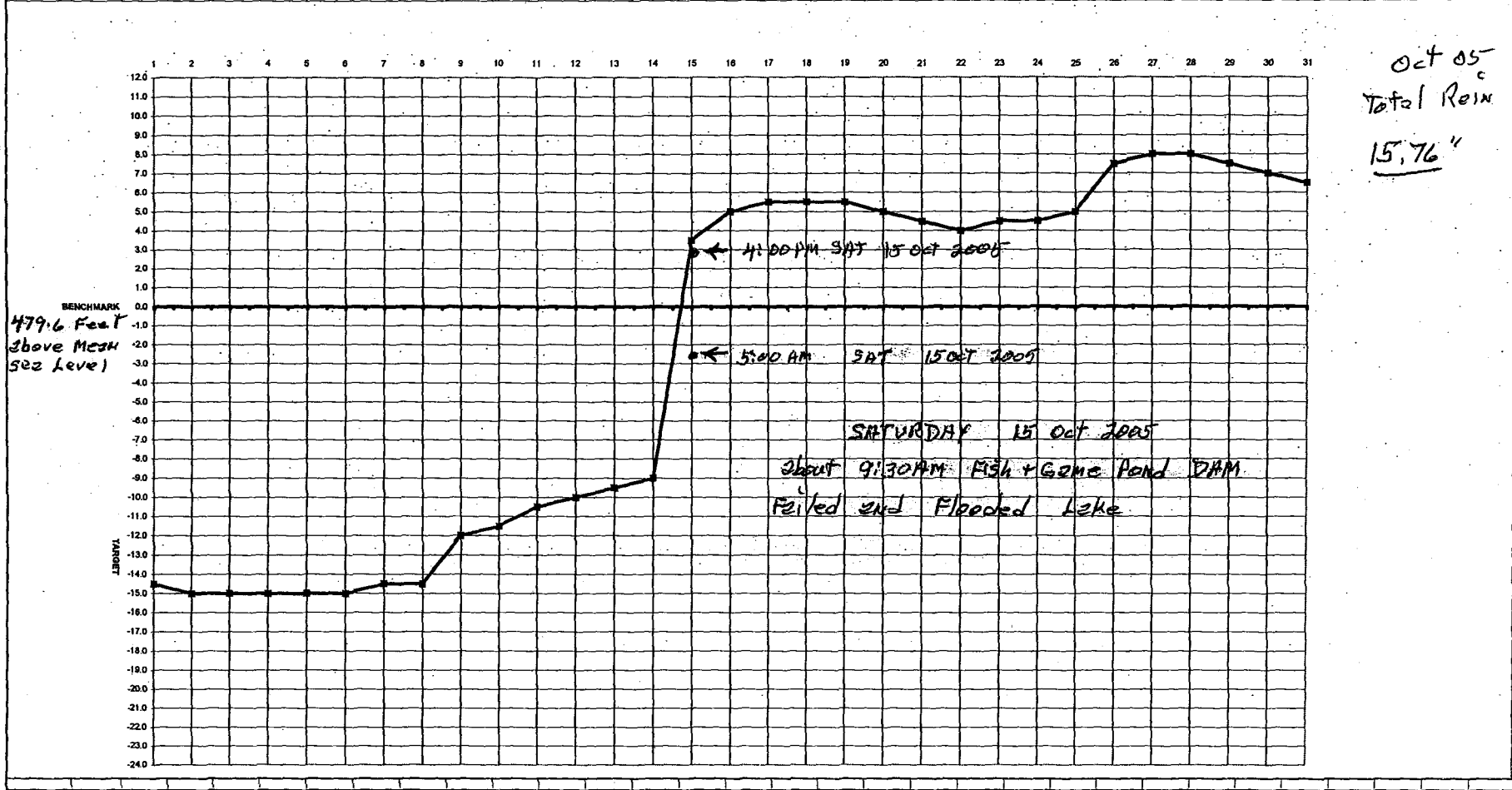
DATE	1t	2f	3s	4s	5m	6t	7w	8t	9f	10s	11s	12m	13t	14w	15t	16f	17s	18s	19m	20t	21w	22t	23f	24s	25s	26m	27t	28w	29t	30f
LAKE-L	0	0	0	0	0	0	0	0	0	0	0	0	0	0	0	0	0	0	0	0	0	0	0	0	0	0	0	0	0	0
LAKE-R	2	2	2	2	2	2	2	2	2	2	2	2	2	2	2	2	2	2	2	2	2	2	2	2	2	2	2	2	2	2
POND	0	0	0	0	0	0	0	0	0	0	0	0	0	0	0	0	0	0	0	0	0	0	0	0	0	0	0	0	0	0
RAIN																														
LEVEL	-13.5	-13.5	-14.0	-14.0	-14.0	-14.5	-14.5	-14.5	-15.0	-15.0	-15.0	-15.5	-15.5	-15.5	2.55	-14.0	-14.0	-14.0	-14.0	0.09	-14.5	-14.5	-14.5	-14.5	-14.5	0.45	-14.5	-14.5	0.31	-14.5



Oct-05

LAKE LEVEL REPORT

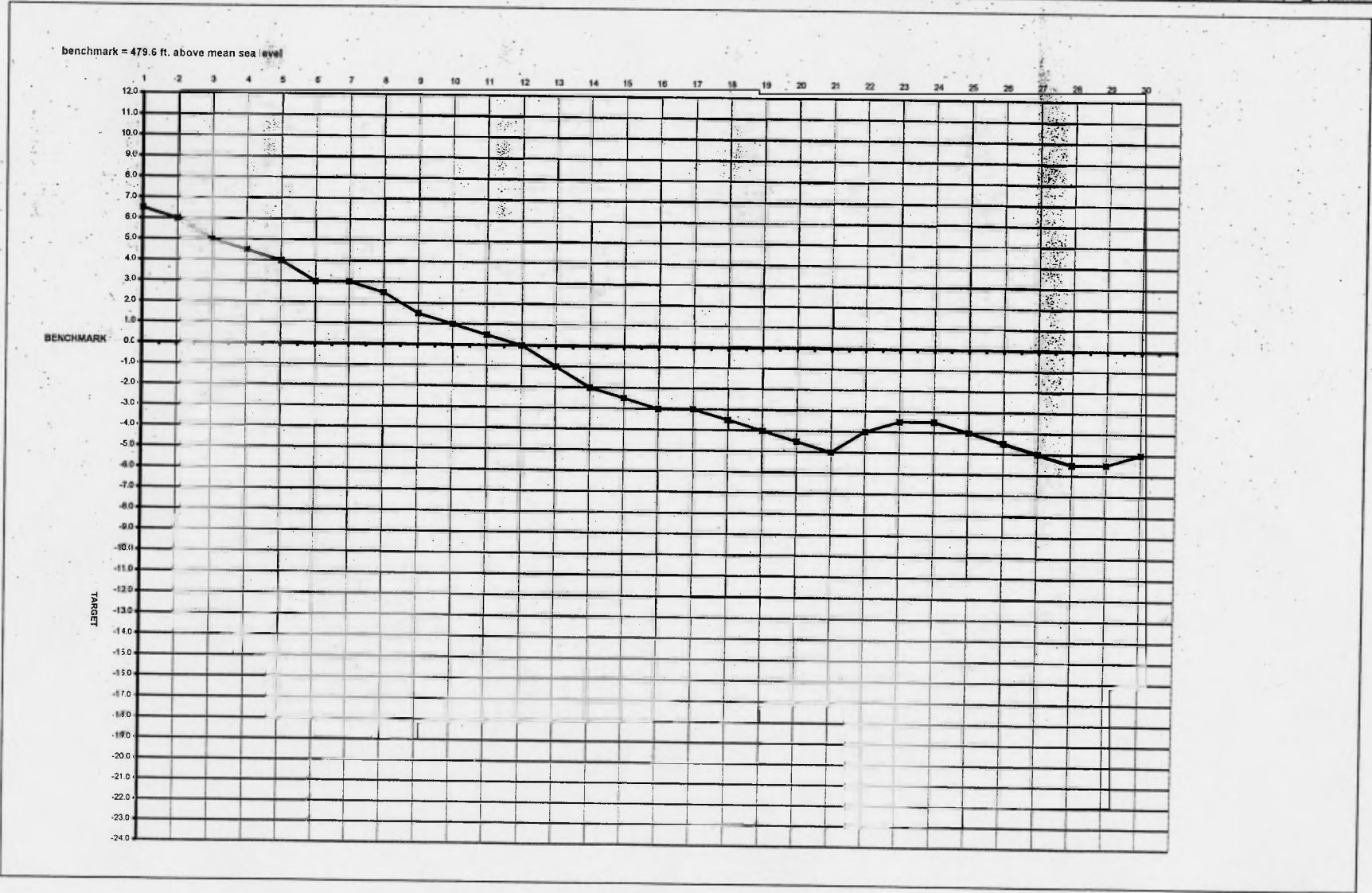
DATE	1s	2s	3m	4t	5w	6t	7f	8s	9s	10m	11t	12w	13t	14f	15s	16s	17m	18t	19w	20t	21f	22s	23s	24m	25t	26w	27t	28f	29s	30s	31m
LAKE-L	0	0	0	0	0	0	0	0	0	2	2	7	7	7	18	18	18	18	18	18	18	18	18	18	18	18	18	18	18	18	18
LAKE-R	2	2	2	2	2	2	2	2	2	5	5	7	7	7	18	18	18	18	18	18	18	18	18	18	18	18	18	18	18	18	
POND	0	0	0	0	0	0	0	0	0	0	0	4	4	4	8	8	8	8	8	8	10	10	10	10	10	10	10	10	10	10	
RAIN							0.70	Rain	2.88	1.16	0.48	0.45	0.41	6.82	0.55		0.03					1.04		1.30	1.30				0.17		
LEVEL	-14.5	-15.0	-15.0	-15.0	-15.0	-15.0	-14.5	-14.5	-12.0	-11.5	-10.5	-10.0	-9.5	-9.0	3.5	5.0	5.5	5.5	5.5	5.0	4.5	4.0	4.5	4.5	5.0	7.5	8.0	8.0	7.5	7.0	6.5



Oct 05
Total Rain
15.76"

Nov-05 LAKE LEVEL REPORT

DATE	1 t	2 w	3 t	4 f	5 s	6 s	7 m	8 t	9 w	10 t	11 f	12 s	13 s	14 m	15 t	16 w	17 t	18 f	19 s	20 s	21 m	22 t	23 w	24 t	25 f	26 s	27 s	28 m	29 t	30 w
LAKE-L	18	18	18	18	18	18	18	22	22	22	22	22	22	22	22	22	22	22	22	22	22	22	22	22	22	22	22	22	22	22
LAKE-R	18	18	18	18	18	18	18	22	22	22	22	22	22	22	22	22	22	22	22	22	22	22	22	22	22	22	22	22	22	22
POND	14	14	14	14	14	14	14	17	17	17	17	17	17	17	17	17	17	17	17	17	17	17	17	17	17	17	17	17	17	17
RAIN					0.15				0.59						0.06	0.80					1.00	0.97		Snow						
LEVEL	6.5	6.0	5.0	4.5	4.0	3.0	3.0	2.5	1.5	1.0	0.5	0.0	-1.0	-2.0	-2.5	-3.0	-3.0	-3.5	-4.0	-4.5	-5.0	-4.0	-3.5	-3.5	-4.0	-4.5	-5.0	-5.5	-5.5	-5.0



Dec-05

LAKE LEVEL REPORT

DATE	1 t	2 f	3 s	4 s	5 m	6 t	7 w	8 t	9 f	10 s	11 s	12 m	13 t	14 w	15 t	16 f	17 s	18 s	19 m	20 t	21 w	22 t	23 f	24 s	25 s	26 m	27 t	28 w	29 t	30 f	31 s
LAKE-L	22	22	22	22	22	22	22	22	22	22	22	22	22	22	22	22	22	22	15	15	15	15	15	15	15	15	15	15	15	15	15
LAKE-R	22	22	22	22	22	22	22	22	22	22	22	22	22	22	22	22	22	22	15	15	15	15	15	15	15	15	15	15	15	15	15
POND	17	17	17	17	17	17	17	17	17	17	17	17	17	17	17	17	17	17	12	12	12	12	12	12	12	12	12	12	12	12	12
RAIN				Snow						Snow						Rain										Rain			Rain		
LEVEL	-5.0	-5.5	-6.0	-6.5	-7.0	-7.5	-8.0	-8.5	-8.5	-8.5	-9.0	-9.5	-10.0	-10.5	-11.0	-11.0	-11.0	-11.5	-12.0	-12.0	-12.0	-12.5	-12.5	-12.5	-13.0	-12.0	-11.5	-11.0	-11.0	-10.5	-10.5

Benchmark: 479.6 ft above mean sea level

