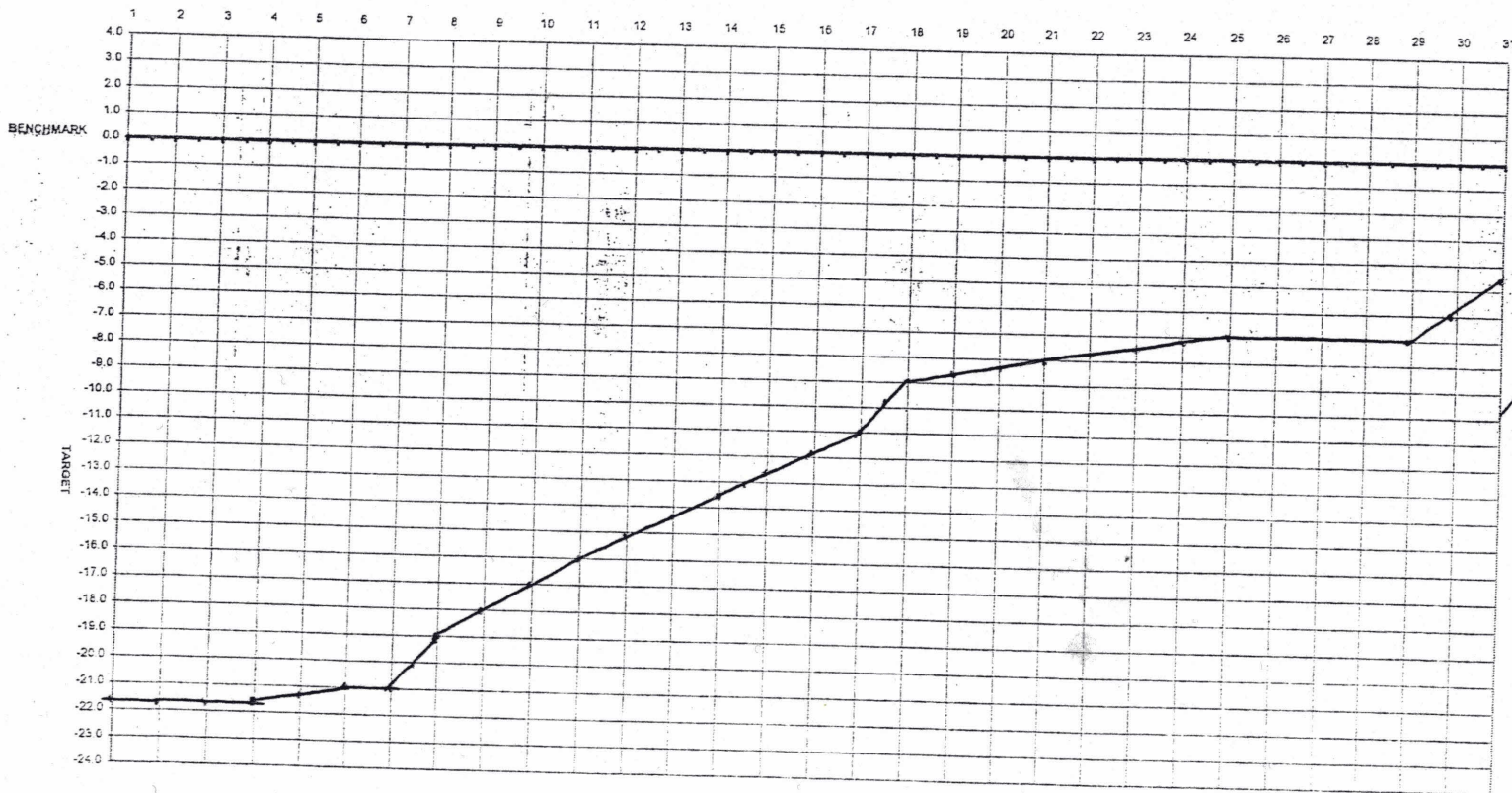


# JANUARY 08 LAKE LEVEL REPORT

DATE	1	2	3	4	5	6	7	8	9	10	11	12	13	14	15	16	17	18	19	20	21	22	23	24	25	26	27	28	29	30	31
LAKE-L	1.5	1.5	1.5	1.5	1.5	1.5	1.5	1.5	1.5	1.5	1.5	1.5	1.5	1.5	1.5	1.5	1.5	1.5	1.5	1.5	1.5	1.5	1.5	1.5	1.5	1.5	1.5	1.5	1.5	1.5	1.5
LAKE-R	3.0	3.0	3.0	3.0	3.0	3.0	3.0	2.0	2.0	2.0	2.0	5.0	5.0	5.0	5.0	5.0	5.0	5.0	5.0	5.0	5.0	7.0	7.0	7.0	7.0	7.0	7.0	7.0	7.0	7.0	
POND	1.0	1.0	1.0	1.0	1.0	1.0	1.0	1.50	1.50	1.50	1.50	1.50	1.50	1.50	1.50	1.50	1.50	1.50	1.50	1.50	1.50	1.50	1.50	1.50	1.50	1.50	1.50	1.50	1.50	1.50	
RAIN	0	0	0	0	0	0	0	0	0.20	0.75	0	0	1.20	0	0	0	0	0.30	0.32	0	0	0	0	0	0	0	0	0	0	0	
LEVEL	21.5	21.5	21.5	21.5	21.5	20.2	20.2	19.0	18.0	17.0	16.0	15.0	14.0	13.5	13.0	12.0	11.0	9.0	8.5	8.5	8.0	7.5	7.5	7.0	7.0	7.0	7.0	7.0	6.0	4.5	

Benchmark=479.6 ft. above mean sea level



TOTAL RAIN  
3.37"

FEBRUARY 08

LAKE LEVEL REPORT

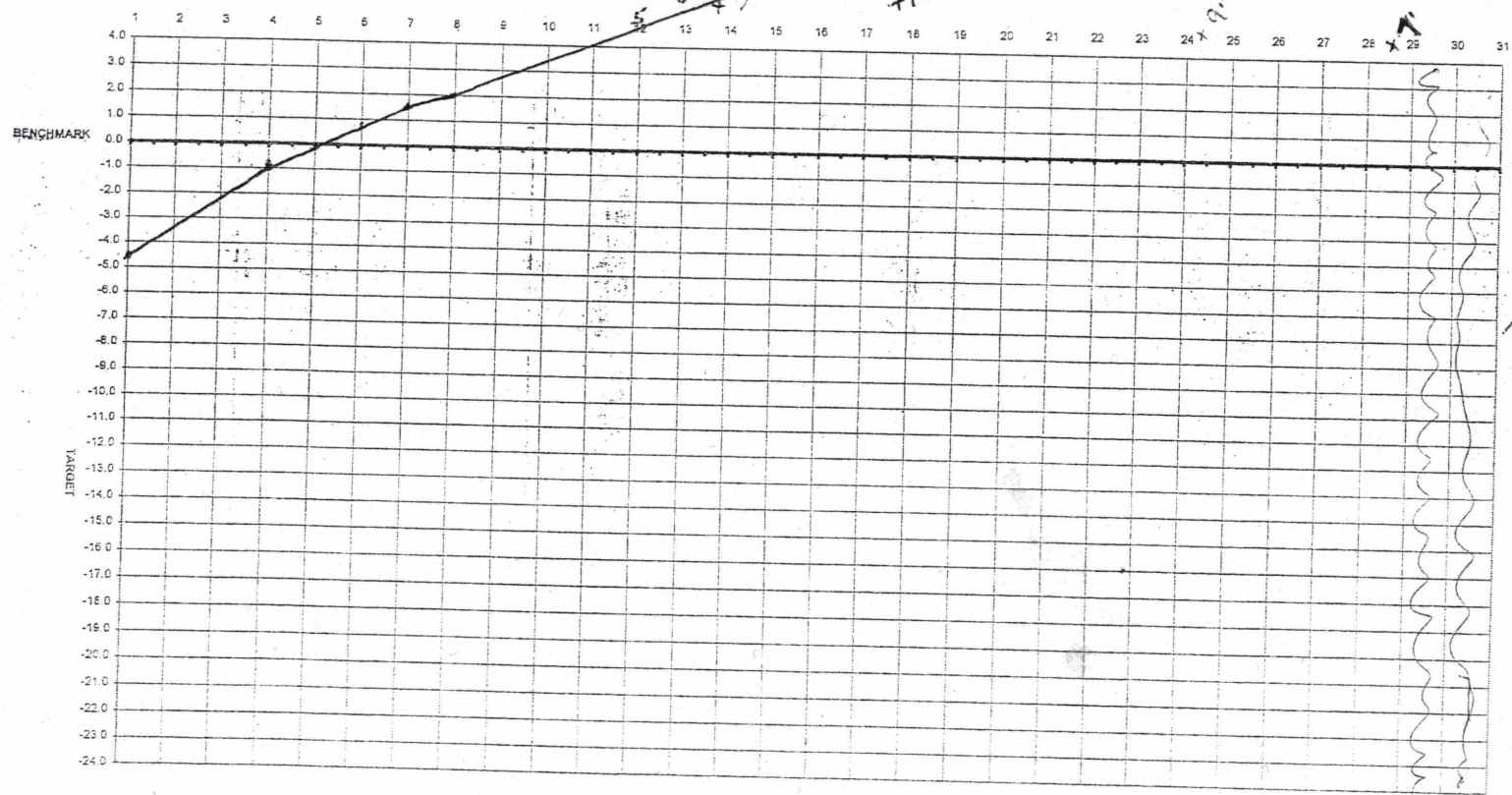
DATE	1	2	3	4	5	6	7	8	9	10	11	12	13	14	15	16	17	18	19	20	21	22	23	24	25	26	27	28	29	30	31
LAKE-L	7	7	7	11	12	13	15	15	15	15	15	15	15	15	15	15	15	17	20	21	23	24	24	24	24	24	24	24	24	24	
LAKE-R	7	7	7	11	12	13	15	15	15	15	15	15	15	15	15	15	15	17	20	21	23	24	24	24	24	24	24	24	24	24	
POND	3	3	3	6	7	8	9	9	9	9	9	9	9	9	9	9	9	12	15	16	19	19	19	19	19	19	21	24	24	24	
RAIN	0	1.20	0	0	1.40	1.85	1.40	1.5	0	0	1.20	0.3	0	0	0	0	1.40	1.20	0	0	0	0	0	0	0	0	2.1	2.4	2.4	2.4	
LEVEL	4.5	3.5	2	1	0	1	1.5	2	3	3.5	4.5	6	7	7.5	8	9	10	11.5	11.5	11.5	11.5	11	10.5	10	9.5	9	8.5	8	7		

← MANNY ON VACATION 9 10

TID TMS

9.5

Benchmark=478.6 ft. above mean sea level

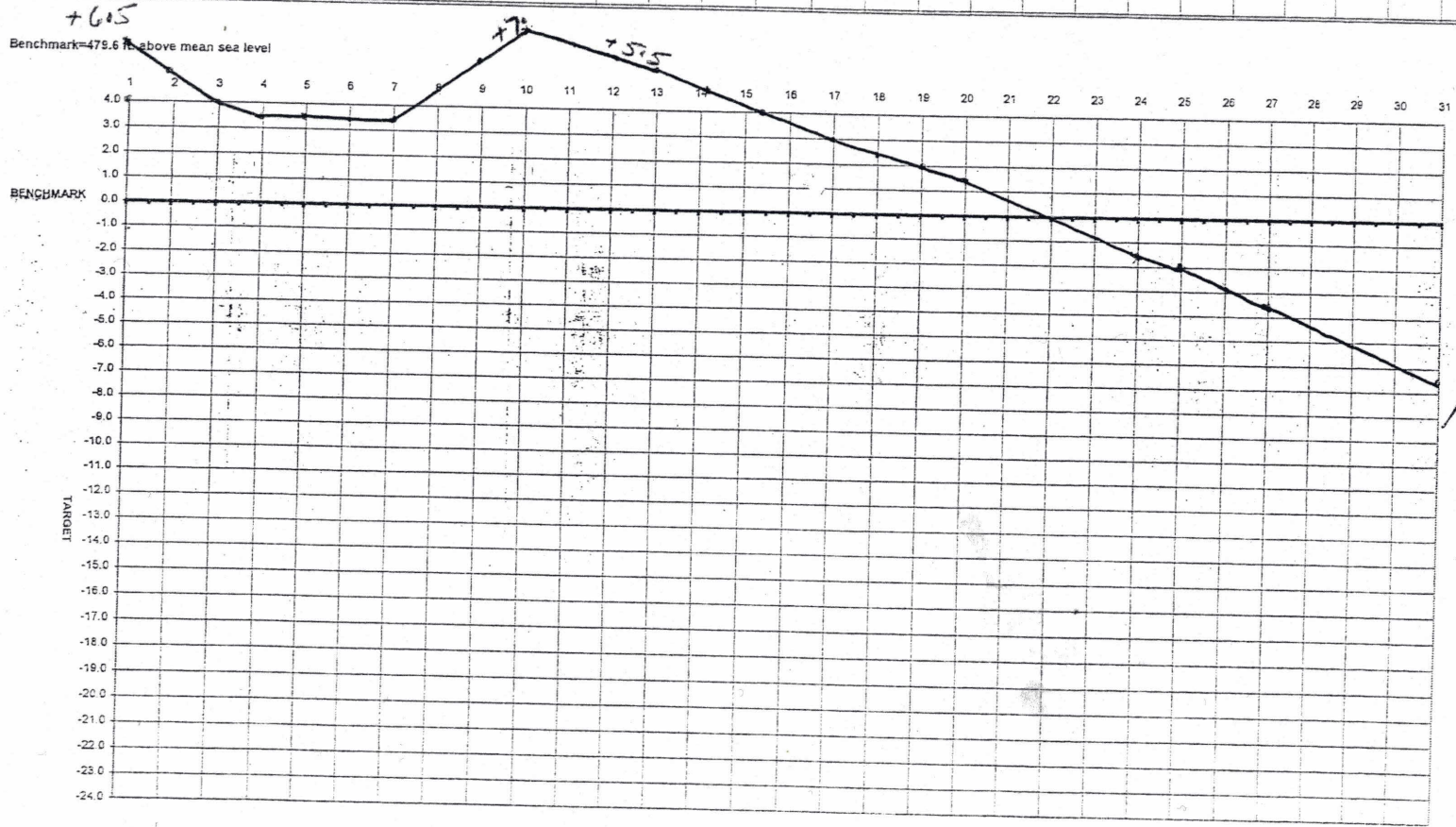


TOTAL RAIN  
9.40"

MARCH 08

LAKE LEVEL REPORT

DATE	1	2	3	4	5	6	7	8	9	10	11	12	13	14	15	16	17	18	19	20	21	22	23	24	25	26	27	28	29	30	31
LAKE-L	24	24	24	24	24	24	24	24	24	25	25	25	25	25	25	25	25	25	25	25	25	25	25	25	25	25	25	25	25	25	
LAKE-R	24	24	24	24	24	24	24	24	24	25	25	25	25	25	25	25	25	25	25	25	25	25	25	25	25	25	25	25	25	25	
POND	24	24	24	24	24	24	24	24	24	24	24	24	24	24	24	24	24	24	24	24	24	24	24	24	24	24	24	24	24	24	
RAIN	0	0	0	0	1.0	0	0	2.5	0	0	0	0	0	0	0	0	0	0	0	0	0	0	0	0	0	0	0	0	0	0	
LEVEL	+6.5	+6.5	+4.0	+3.5	+3.5	+3.5	+3.5	+4.5	+6.0	+7.0	+6.5	+6.5	+5.5	+5.5	+4.0	+3.5	+3.0	+2.5	+2.0	+1.5	+1.0	0	-1.0	-1.5	-2.0	-3.0	-3.5	-4.5	-6.0	-6.5	

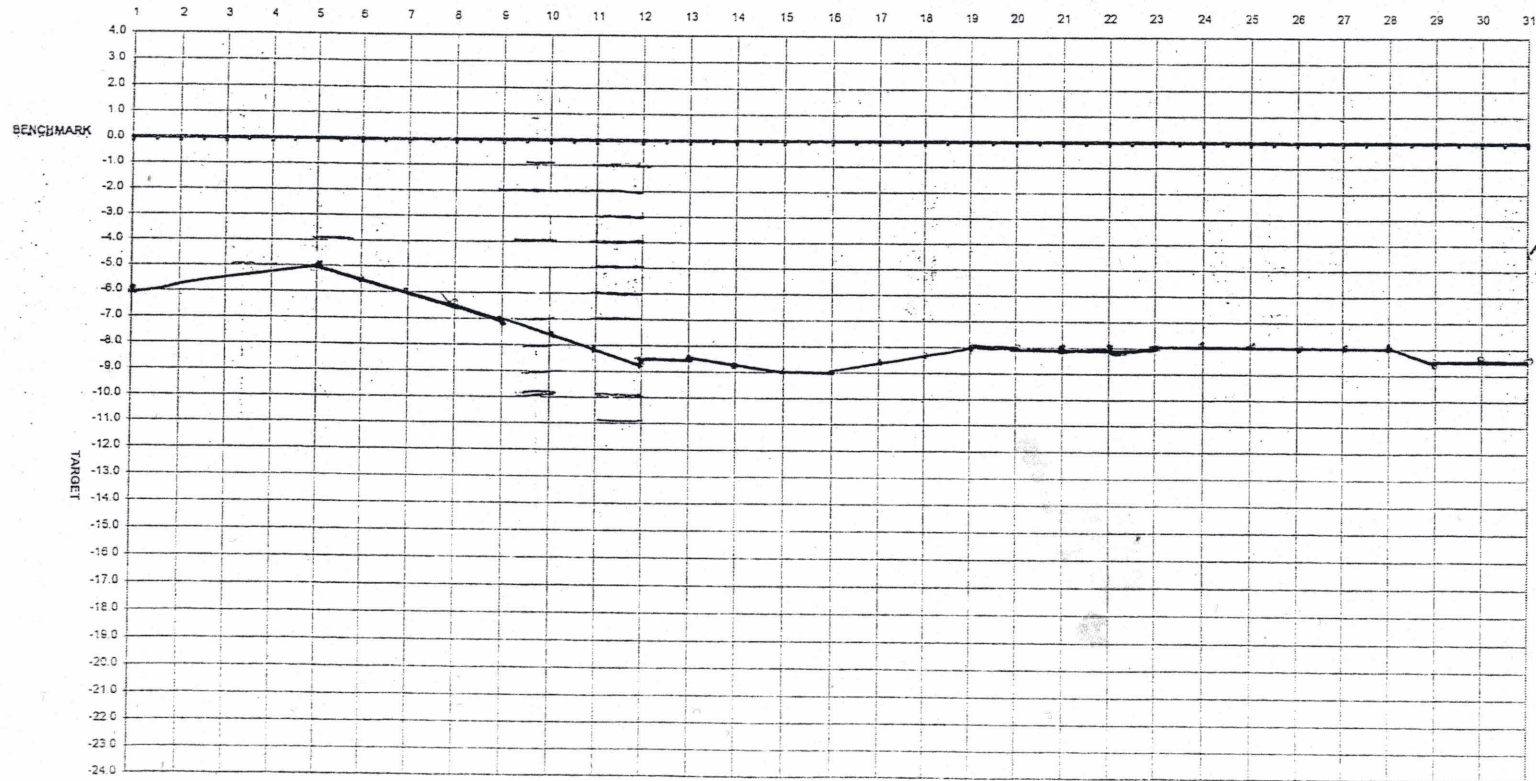


TOTAL RAIN 5.25"

# MAY 2008 LAKE LEVEL REPORT

DATE	1	2	3	4	5	6	7	8	9	10	11	12	13	14	15	16	17	18	19	20	21	22	23	24	25	26	27	28	29	30	31
LAKE-L	1	1	1	1	4	8	10	13	16	14	16	16	7	2	2	2	2	2	6	6	6	6	6	6	6	6	6	2	2	2	
LAKE-R	20	24	24	24	24	24	24	24	24	24	24	7	7	2	2	2	2	2	2	2	2	2	2	2	2	2	2	2	2	2	
POND	0	5	5	5	10	14	14	14	14	14	14	0	0	0	0	0	0	0	0	0	0	0	0	0	0	0	0	0	0	0	
RAIN	0	0	0	.50	0	0	0	0	.25	0	0	0	0	0	0	.75	0	0	0	0	0	0	0	0	0	0	.25	0	0	.20	
LEVEL	6.5	5.5	5.5	5.5	5.5	5.5	6.0	6.5	7.0	7.5	8.0	8.5	8.5	8.5	9.0	9.0	8.5	8.5	8.5	8.5	8.5	8.5	8.5	8.5	8.5	8.5	8.5	8.5	8.5	8.5	

Benchmark=479.6 ft. above mean sea level



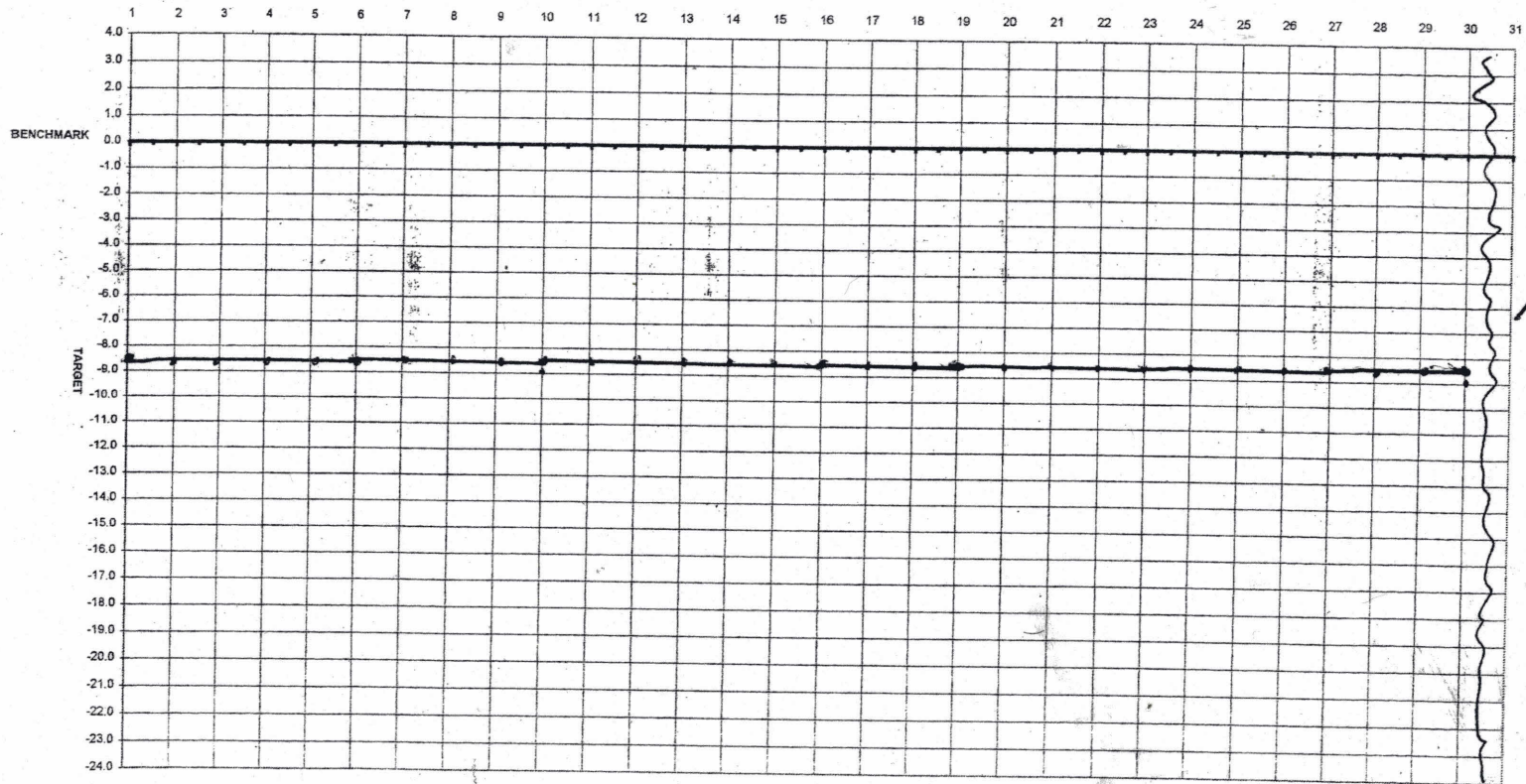
TOTAL  
RAIN  
1.95"

JUNE 08

LAKE LEVEL REPORT

DATE	1	2	3	4	5	6	7	8	9	10	11	12	13	14	15	16	17	18	19	20	21	22	23	24	25	26	27	28	29	30	31
LAKE-L	2	2	2	2	2	2	2	2	2	2	2	2	2	2	2	2	2	2	2	2	2	2	2	2	2	2	2	2	2	2	
LAKE-R	2	2	2	2	2	2	2	2	2	2	2	2	2	2	2	2	2	2	2	2	2	2	2	2	2	2	2	2	2	2	
POND	0	0	0	0	0	0	0	0	0	0	0	0	0	0	0	0	0	0	0	0	0	0	0	0	0	0	0	0	0		
RAIN	0	0	0	0.20	0	0.45	0	0	0	0	0	0	0	0	0.15	0.65	0	0.15	0	0	0	0	0	0	0	0	0	0	0		
LEVEL	8.5	8.5	8.5	8.5	8.5	8.5	8.5	8.5	8.5	8.5	8.5	8.5	8.5	8.5	8.5	8.5	8.5	8.5	8.5	8.5	8.5	8.5	8.5	8.5	8.5	8.5	8.5	8.5	8.5		

Benchmark=479.6 ft. above mean sea level



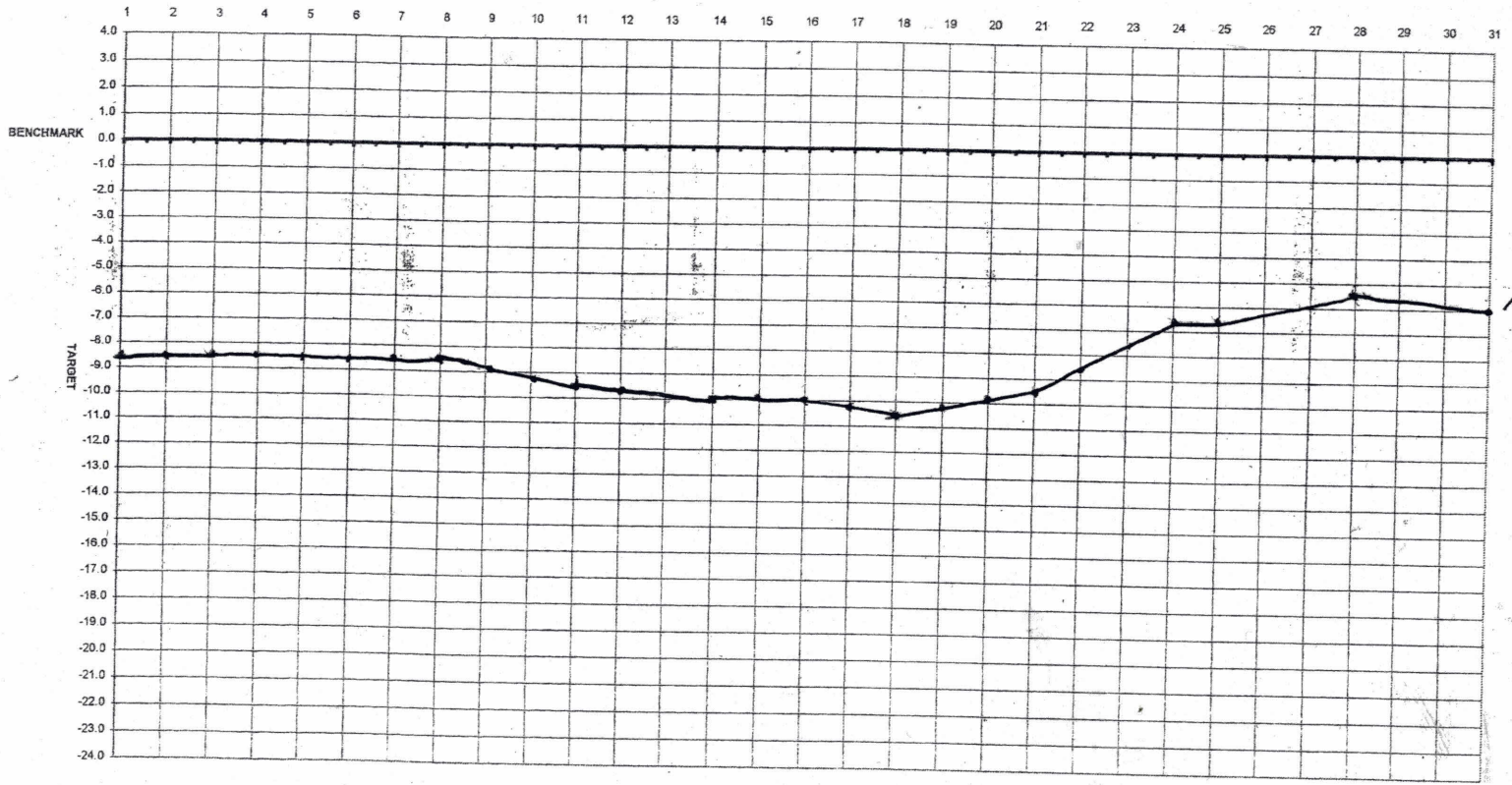
TOTAL RAIN 2.30"

JULY 08

LAKE LEVEL REPORT

DATE	1	2	3	4	5	6	7	8	9	10	11	12	13	14	15	16	17	18	19	20	21	22	23	24	25	26	27	28	29	30	31
LAKE-L	2	2	2	2	2	2	2	2	2	2	1	1	1	1	1	1	1	1	1	1	1	1	1	1	1	1	1	1	1	1	1
LAKE-R	2	2	2	2	2	2	2	2	2	2	1	1	1	1	1	1	1	1	1	1	1	1	1	1	1	1	1	1	1	1	
POND	0	0	0	0	0	0	0	0	0	0	0	0	0	0	0	0	0	0	0	0	0	0	0	0	0	0	0	0	0	0	
RAIN	0	0	0	.25	0	0	0	0	.15	0	0	0	0	0	0	0	0	0	0	0	0	0	0	0	0	0	0	0	0	0	
LEVEL	8.5	8.5	8.5	8.5	8.5	8.5	8.5	8.5	9.	9.	9.5	9.5	10	10	10	10	10	10.5	10.	10.5	10.	10.5	10.	10.5	10.	10.5	10.	10.5	10.	10.	

Benchmark=479.6 ft. above mean sea level



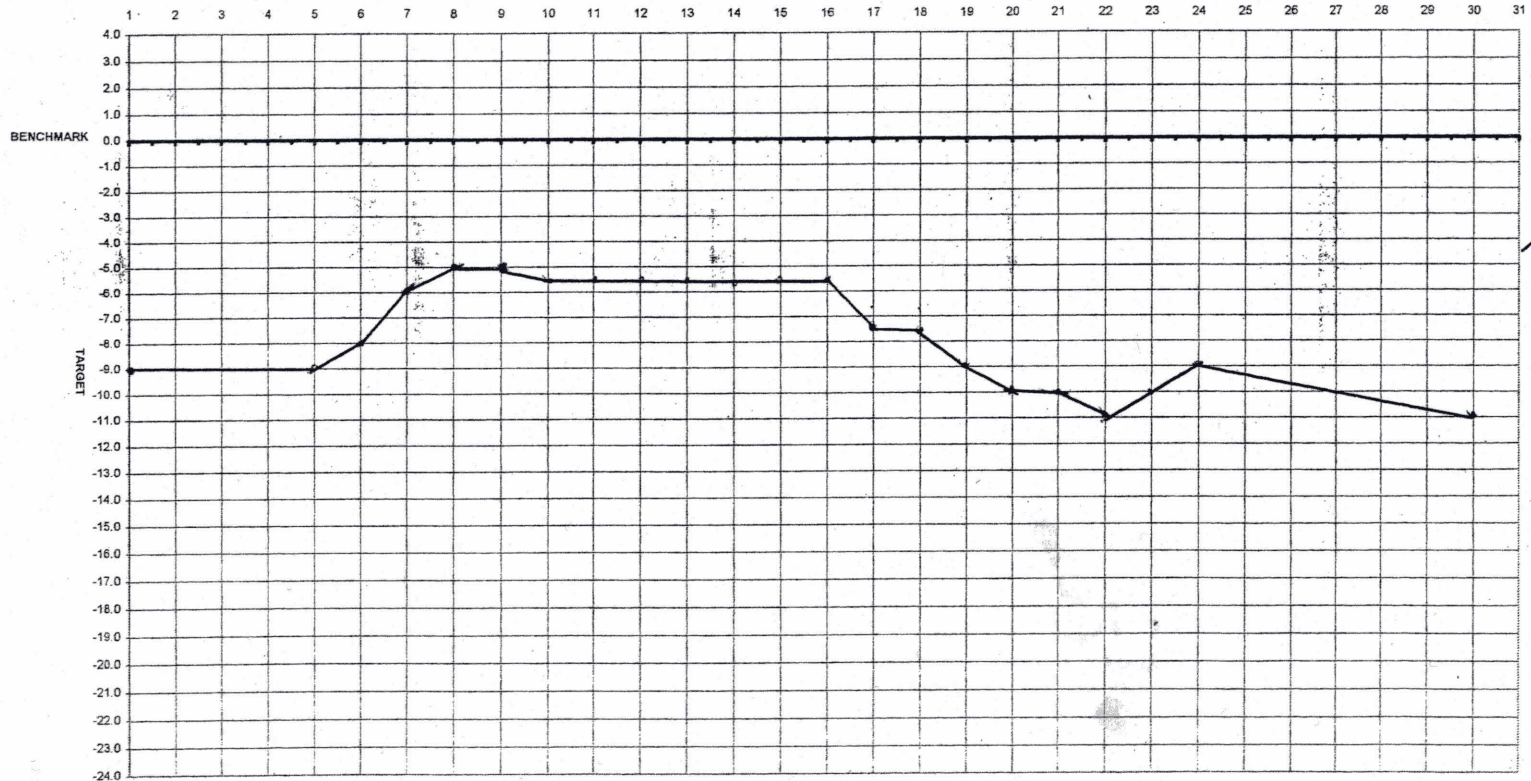
TOTAL RAIN 5.85"

# SEPTEMBER 08

## LAKE LEVEL REPORT

DATE	1	2	3	4	5	6	7	8	9	10	11	12	13	14	15	16	17	18	19	20	21	22	23	24	25	26	27	28	29	30	31
LAKE-L	2	2	2	2	1	8	8	12	12	14	14	14	16	16	16	16	14	14	16	13	13	13	13	13	13	13	13	13	13	13	
LAKE-R	1	1	2	2	2	8	8	12	12	16	16	16	16	16	16	16	16	16	13	13	13	13	13	13	13	13	13	13	13		
POND	0	0	0	0	0	4	4	8	8	12	12	12	12	12	12	12	12	12	12	12	12	12	12	9	9	9	9	9	9		
RAIN	0	0	0	0	0	4.5	0	0	5.0	0	0	0	4.0	0	0	0	0	0	0	0	0	0	0	0	0	2.0	0	2.55	0.70		
LEVEL	-9	-9	-9	-9	-9	-8	-6	-5	-5	-6	-6.5	-6.5	-6.5	-6.5	-6.5	-6.5	-7.5	-7.5	-9	-10	-10	-11	-10	-9	-9.5	-10	-10	-10	-11	-11	

Benchmark=479.6 ft. above mean sea level



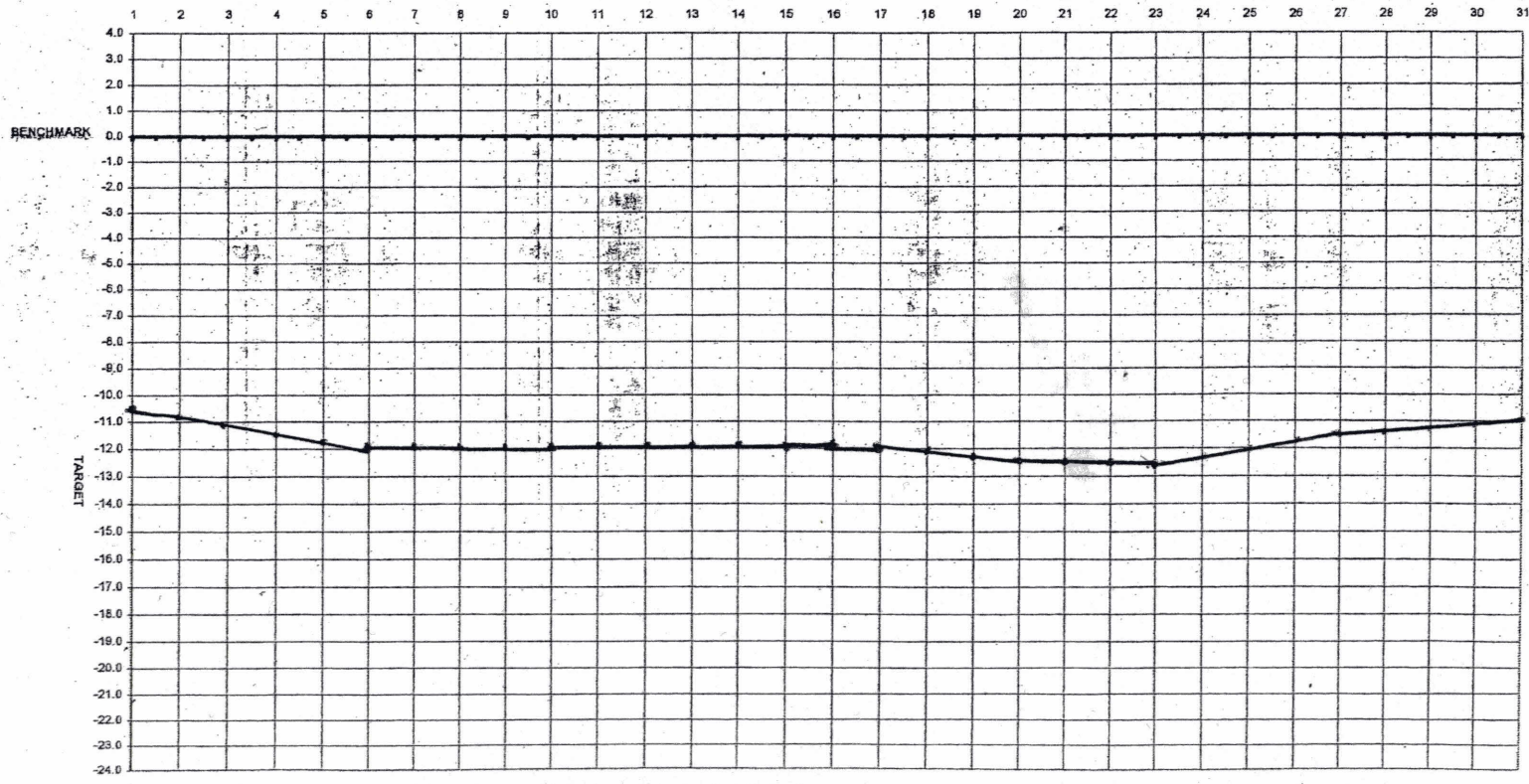
TOTAL  
RAIN  
10.65"

# OCTOBER 08

## LAKE LEVEL REPORT

DATE	1	2	3	4	5	6	7	8	9	10	11	12	13	14	15	16	17	18	19	20	21	22	23	24	25	26	27	28	29	30	31	
LAKE-L	13	13	9	9	9	5	5	5	5	5	5	5	5	5	5	5	5	5	5	2	2	2	2	2	2	2	2	2	2	2		
LAKE-R	13	13	9	9	9	5	5	5	5	2	2	2	2	2	2	2	2	2	2	2	2	2	2	2	2	2	2	2	2	2		
POND	9	9	5	5	5	0	0	0	0	0	0	0	0	0	0	0	0	0	0	0	0	0	0	0	0	0	0	0	0	2		
RAIN	0	0	0	0	0	0	0	0	0	0	0	0	0	0	0	0	0	0	0	0	0	0	0	0	0	0	0	0	0	0		
LEVEL	10.5	11	11	11.5	12	12	12	12	12	12	12	12	12	12	12	12	12	12	12.5	12.5	12.5	12.5	12.5	12.5	12.5	12	12	11.5	11.5	11.5	11	11

Benchmark=479.6 ft. above mean sea level



TOTAL RAIN  
1.80"

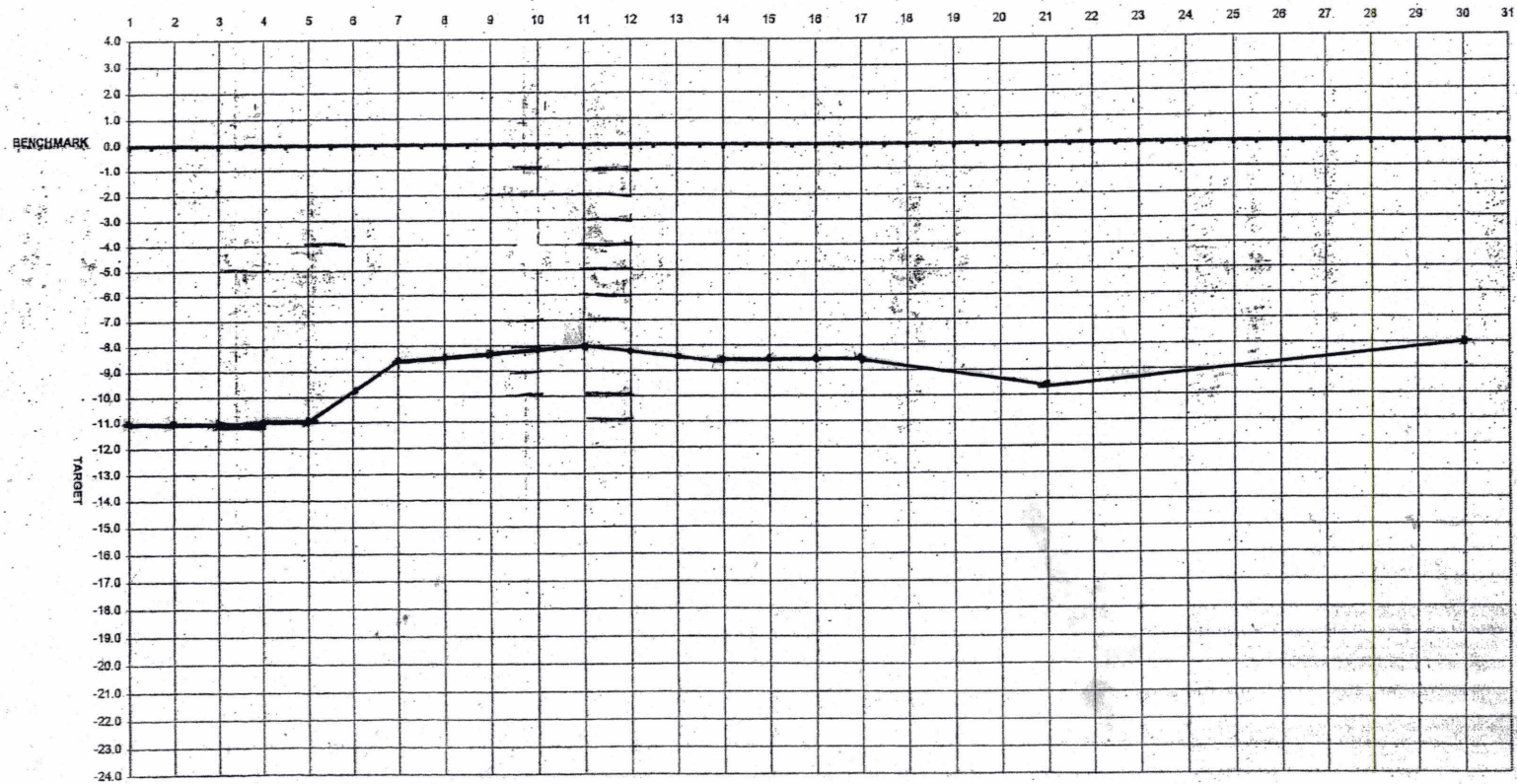


# NOVEMBER 08

## LAKE LEVEL REPORT

DATE	1	2	3	4	5	6	7	8	9	10	11	12	13	14	15	16	17	18	19	20	21	22	23	24	25	26	27	28	29	30	31
LAKE-L	2	2	2	2	3	4	6	6	6	6	11	11	11	11	11	11	13	13	13	13	13	13	13	13	13	13	13	13	13	13	
LAKE-R	2	2	2	2	3	4	6	6	6	6	11	11	11	11	11	11	13	13	13	13	13	13	13	13	13	13	13	13	13		
POND	2	0	0	0	0	1	2	2	2	2	7	7	7	7	7	7	7	7	7	7	7	7	7	7	7	7	7	7	7		
RAIN	0	0	0	0	0	1.5	0	2.0	0	0	0	0	2.0	0	5.5	0	0	0	0	0	0	0	0	0	0	1.75	0	0	0	0	
LEVEL	11	11	11	11	11	10	8.5	8.5	8.5	8	8	8	8.5	8.5	8.5	8.5	8.5	9	9	9.5	9.5	9.5	9.5	9	9	8.5	8.5	8.5	8	8	

Benchmark=479.6 ft. above mean sea level



~~XXXXXXXXXX~~  
TOTAL  
RAINF  
4.95"