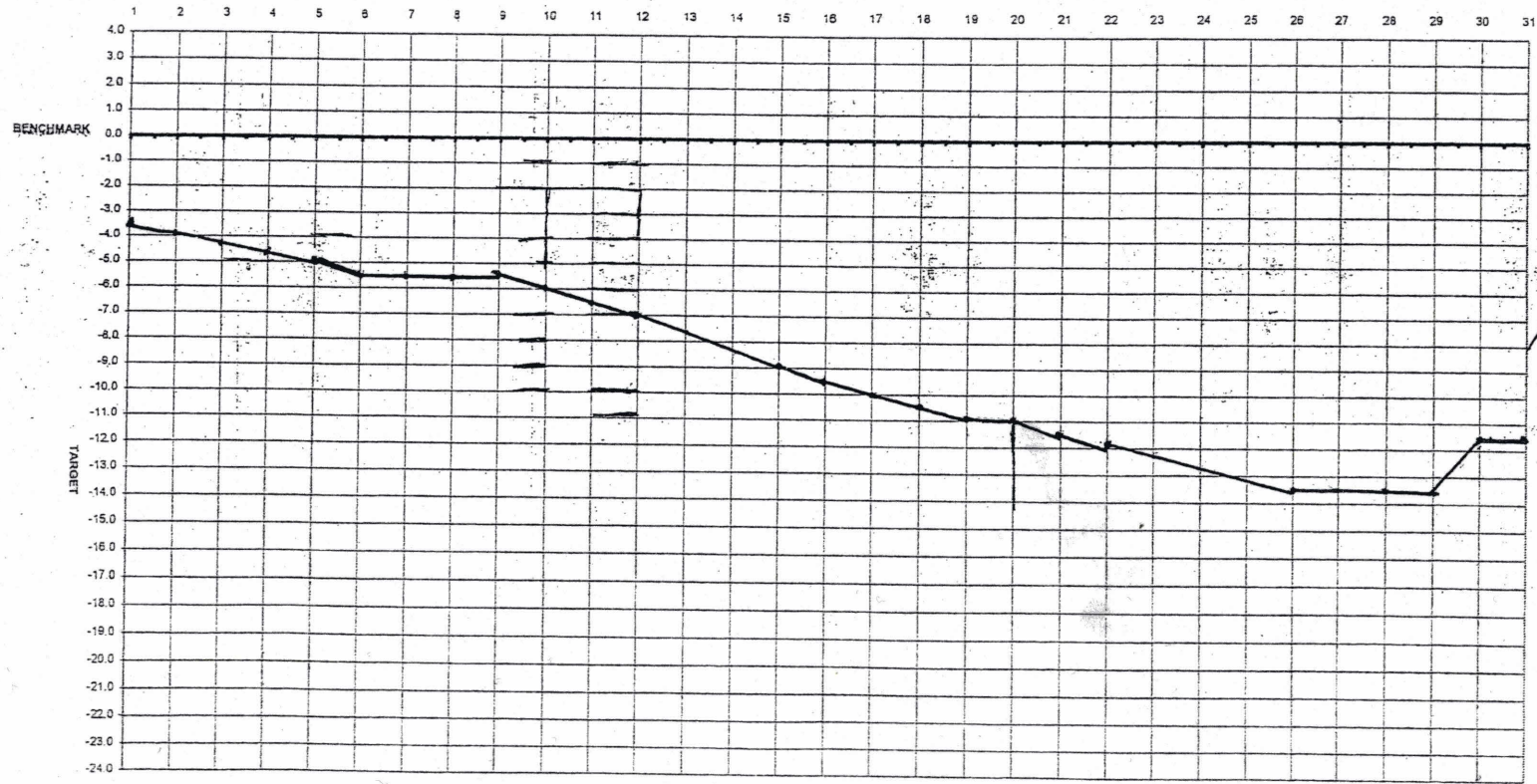


JANUARY 09

LAKE LEVEL REPORT 1

DATE	1	2	3	4	5	6	7	8	9	10	11	12	13	14	15	16	17	18	19	20	21	22	23	24	25	26	27	28	29	30	31
LAKE-L	20	20	20	20	20	20	20	20	20	20	20	20	20	20	20	20	20	20	17	17	14	10	8	8	8	8	8	8	8	8	
LAKE-R	20	20	20	20	20	20	20	20	20	20	20	20	20	20	20	20	20	20	17	17	14	10	8	8	8	8	8	8	8	8	
POND	20	20	20	20	20	20	20	20	20	20	20	20	20	20	20	20	20	20	14	14	10	10	10	10	4	4	4	4	4	4	
RAIN	.45	0	0	0	0	0	1.25	0	0	.40	0	0	0	0	0	0	0	1.05	0	0	0	0	0	0	0	0	.75	0	0	0	
LEVEL	3.5	4.0	4.4	4.5	5.0	5.5	5.5	5.5	5.5	6.0	6.5	7.0	7.5	8.5	9.0	9.5	10.0	10.5	11.0	11.5	12.0	12.0	12.5	13.0	13.5	13.5	13.5	13.5	13.5	13.5	

Benchmark=479.6 ft. above mean sea level



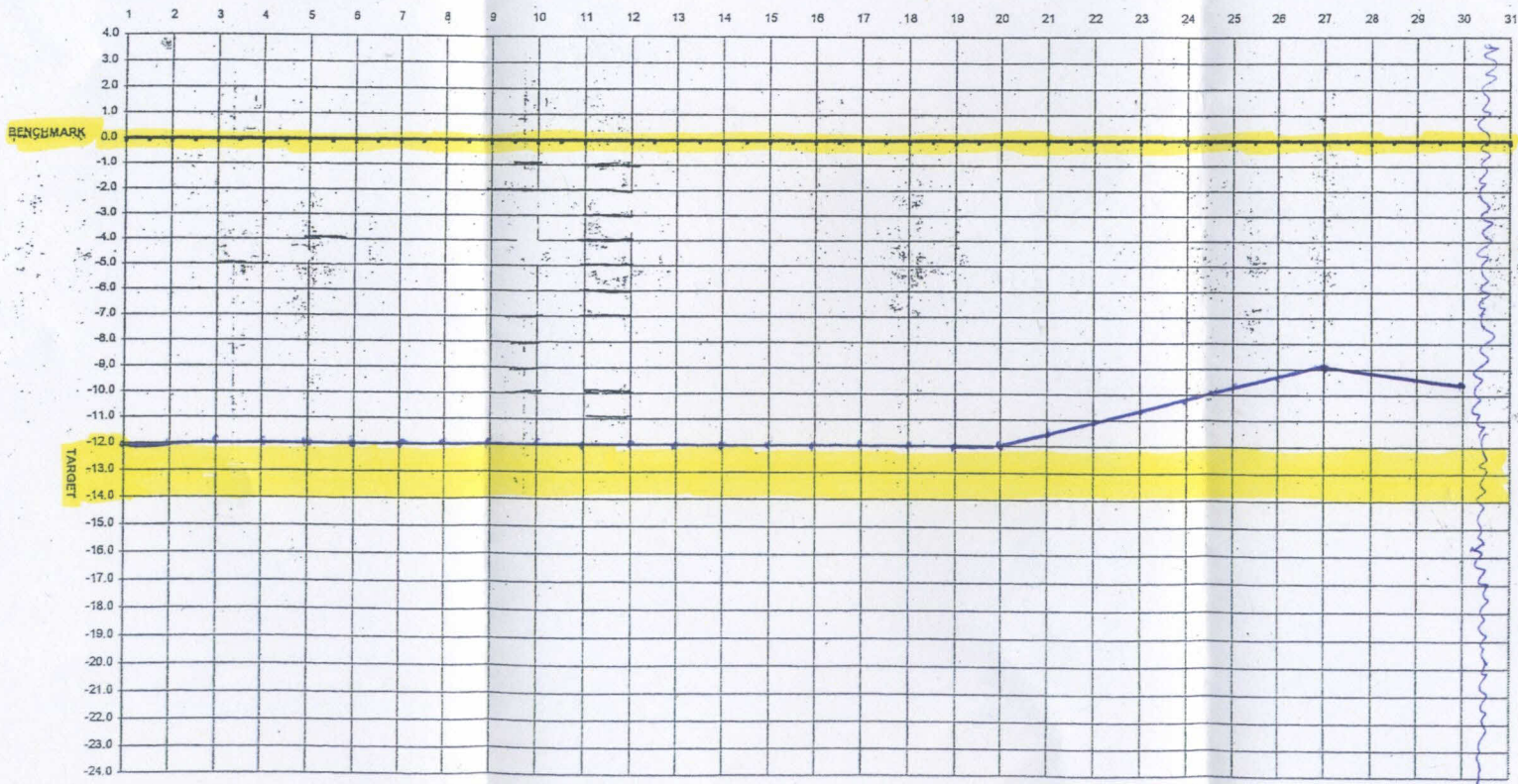
TOTAL RAIN 3.90"

APRIL 2009

LAKE LEVEL REPORT

DATE	1	2	3	4	5	6	7	8	9	10	11	12	13	14	15	16	17	18	19	20	21	22	23	24	25	26	27	28	29	30	31
LAKE-L	12	12	12	12	12	12	12	12	9	9	9	9	7	7	7	7	7	7	7	11	11	11	11	11	11	11	11	11	11	11	11
LAKE-R	12	12	12	12	12	12	12	12	9	9	9	9	7	7	7	7	7	7	7	11	11	11	11	11	11	11	11	11	11	11	11
POND	12	12	12	12	12	12	12	12	9	9	9	9	3	3	3	3	3	3	3	5	5	5	5	5	5	5	5	5	5	5	
RAIN	0	.20	.65	0	0	.75	0	0	0	.20	.30	0	0	0	0	0	0	.05	0	.25	.12	.20	0	0	0	0	0	0	0	0	
LEVEL	12	12	12	12	12	12	12	12	12	12	12	12	12	12	12	12	12	12	12	11.5	11	10.5	10	9.5	9	9	9	9.5	9.5		

Benchmark=479.6 ft. above mean sea level



TOTAL RAIN 3.8"

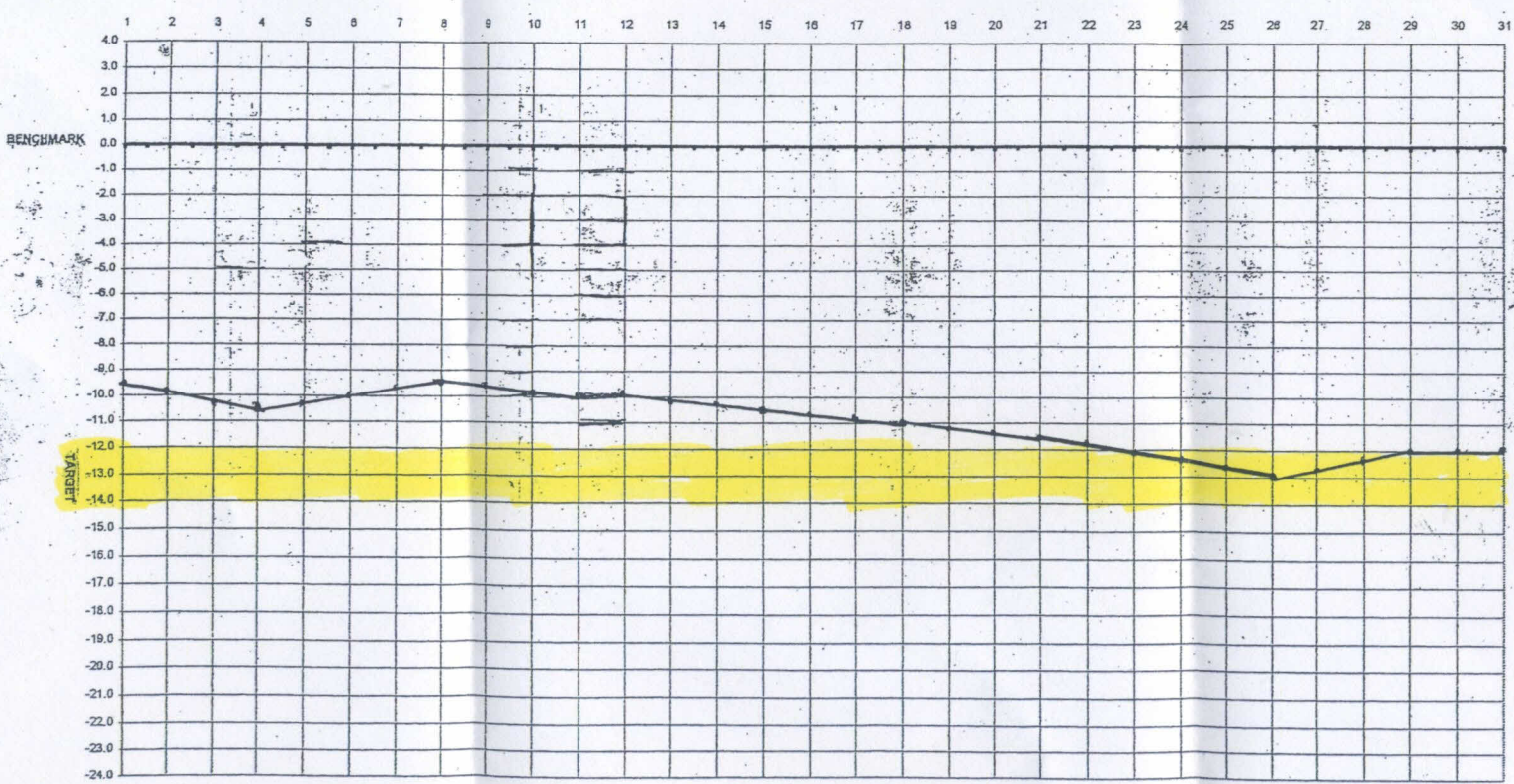


MAY 09

LAKE LEVEL REPORT

DATE	1	2	3	4	5	6	7	8	9	10	11	12	13	14	15	16	17	18	19	20	21	22	23	24	25	26	27	28	29	30	31
LAKE-L	11	11	11	11	11	11	11	11	11	11	11	11	11	11	11	11	11	8	8	8	5	5	5	5	5	3	3	3	0	0	0
LAKE-R	11	11	11	11	11	11	11	11	11	11	11	11	11	11	11	11	11	8	8	8	5	5	5	5	5	3	3	3	3	3	3
POND	5	5	5	5	5	5	5	5	5	5	5	5	5	5	5	5	5	5	5	5	5	5	5	5	0	0	0	0	0	0	
RAIN	.05	0	0	0	.20	.35	.20	0	.35	0	0	0	0	.10	0	0	.20	0	0	0	0	0	.05	0	0	.25	0	.15	.05	.05	
LEVEL	9.5	10	10	10.5	10.5	10	9.5	9.5	9.5	10	10	10	10	10.5	10.5	10.5	11	11	11	11.5	11.5	11.5	12	12.5	12.5	13	12.5	12.5	12	12	12

Benchmark=479.6 ft. above mean sea level



TOTAL RAIN 3.0"

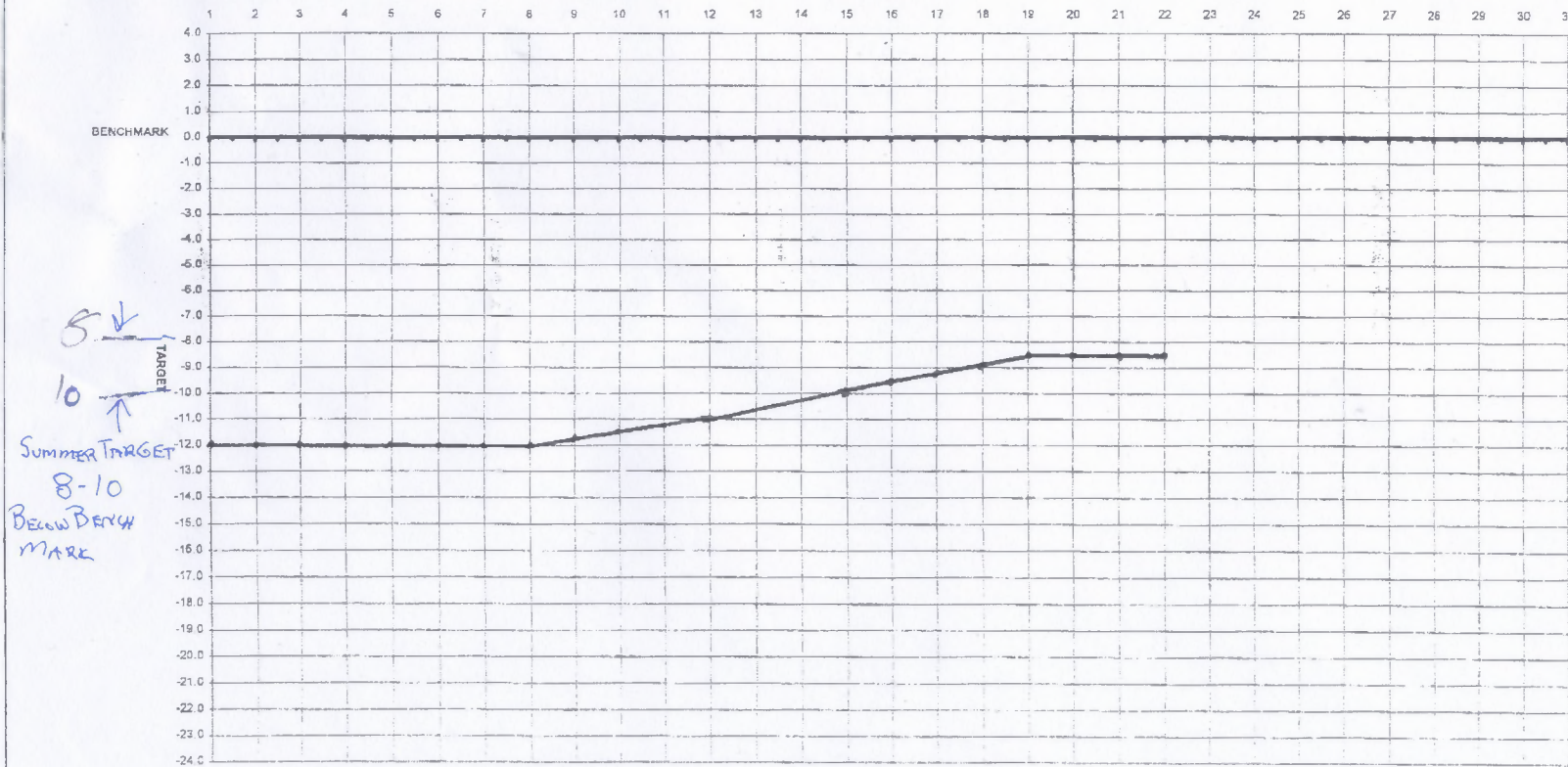


JUNE 09

LAKE LEVEL REPORT

DATE	1	2	3	4	5	6	7	8	9	10	11	12	13	14	15	16	17	18	19	20	21	22	23	24	25	26	27	28	29	30	31
LAKE-L	0	0	0	0	0	0	0	0	0	0	0	0	0	0	0	0	0	0	0	0	0	0	0								
LAKE-R	2	2	2	2	2	2	2	2	2	2	2	2	2	2	2	2	2	2	8	8	8	8	8								
POND	0	0	0	0	0	0	0	0	0	0	0	0	0	0	0	0	0	0	0	0	0	0	0								
RAIN	0	0	0	0	0	0	0	0	0	0	0	0	0	0	0	0	0	0	0	0	0	0	0								
LEVEL	12	12	12	12	12	12	12	12	11.5	11.5	11	11	10.5	10.5	10	9.5	9	9	8.5	8.5	8.5	8.5									

Benchmark=479.6 ft. above mean sea level



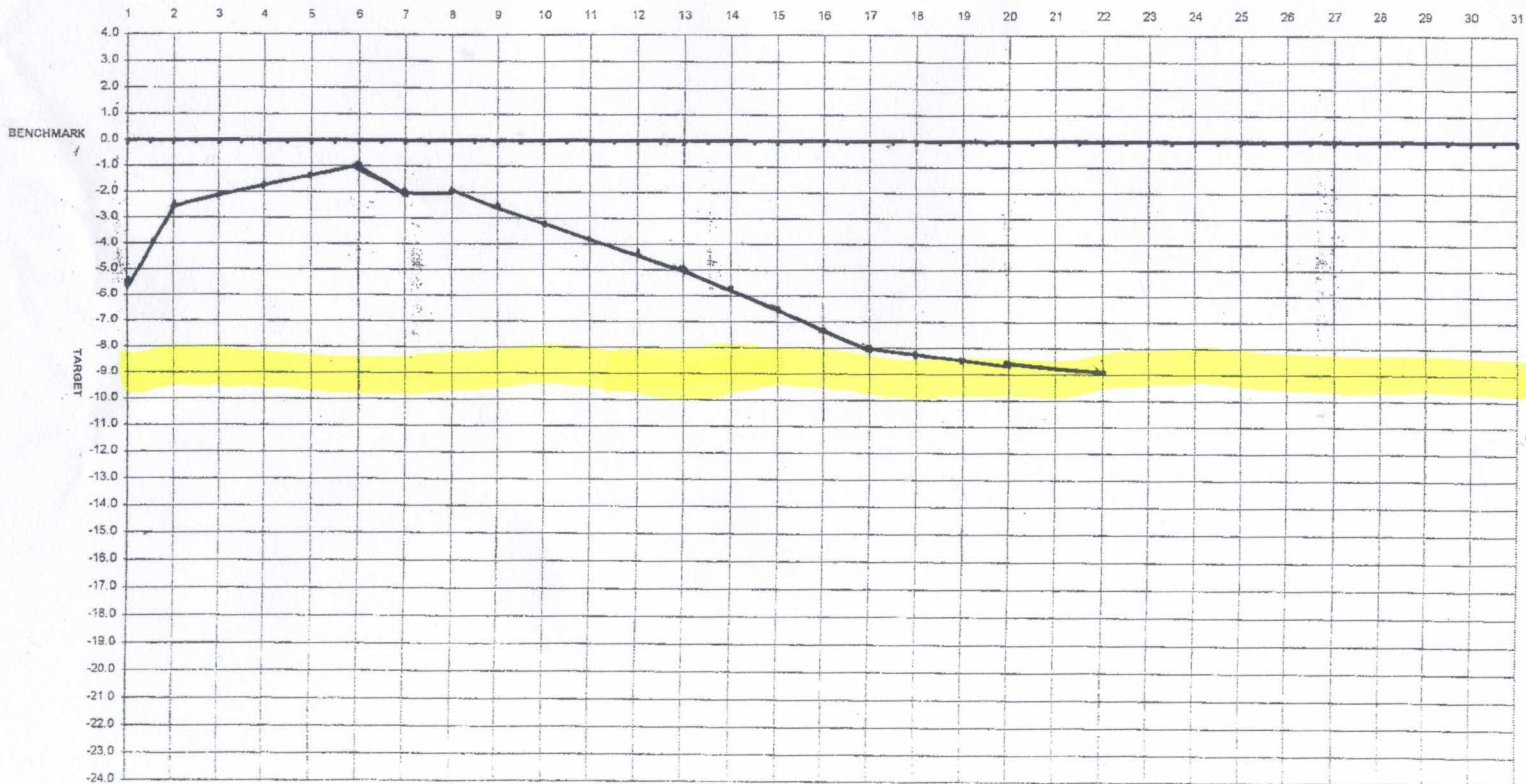
SUMMER TARGET 8" TO 10"

JULY 09

LAKE LEVEL REPORT

DATE	1	2	3	4	5	6	7	8	9	10	11	12	13	14	15	16	17	18	19	20	21	22	23	24	25	26	27	28	29	30	31
LAKE-L	9	18	18	18	18	21	21	21	21	21	21	21	21	21	17	17	10	10	10	14	14	10									
LAKE-R	9	18	18	18	18	21	21	21	21	21	21	21	21	21	17	17	10	10	10	14	14	10									
POND	4	14	14	14	14	17	17	17	17	17	17	17	17	17	17	10	10	10	10	10	10	10									
RAIN	1.10	1.55	0.5	0	0	0	1.10	0.5	0	0	4.0	0.50	0	0	0	0.5	7.5	1.0	0	0	0.81										
LEVEL	5.5	2.5	2	2	1.5	1	2	2	2.5	3	4	4.5	5	5.5	6.5	7.5	8	8	8.5	8.5	9	9									

Benchmark=479.6 ft. above mean sea level

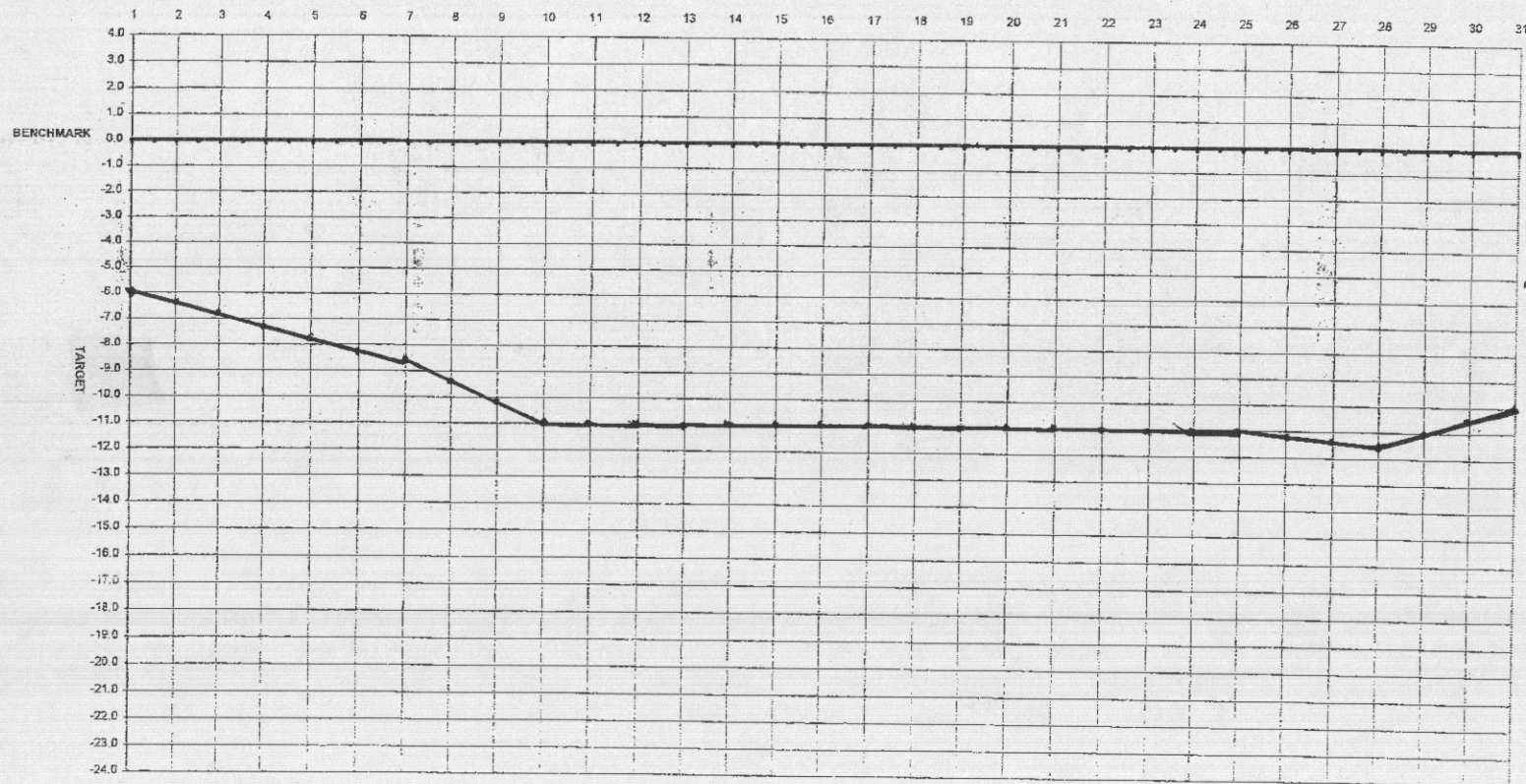


Summer Target

August 09 LAKE LEVEL REPORT

DATE	1	2	3	4	5	6	7	8	9	10	11	12	13	14	15	16	17	18	19	20	21	22	23	24	25	26	27	28	29	30	31		
LAKE-L	12	12	12	12	12	12	12	12	12	2	2	2	2	0	0	0	0	0	0	0	0	0	0	0	0	0	0	0	0	0	0		
LAKE-R	12	12	12	12	12	12	12	12	12	2	2	2	2	2	2	2	2	2	2	2	2	2	2	2	2	2	2	2	2	2	2		
POND	12	12	12	12	12	12	12	12	12	0	0	0	0	0	0	0	0	0	0	0	2	2	2	2	2	2	2	2	2	2			
RAIN	0	0	0	1	0	0	0	0	0	0	0	0	0	0	0	0	0	0	0	0	2	1	4	0	3	3	0	0	0	0	0		
LEVEL	6	6.5	7.5	7.5	8	8	8.5	9.5	10	7	7	7	7	-1	-1	-1	-1	-1	-1	7	-1	-1	-1	-1	-1	-1	-1	11.5	11.5	11	10.5	7	0
← MANNY VACATION →																																	

Benchmark=479.6 ft. above mean sea level



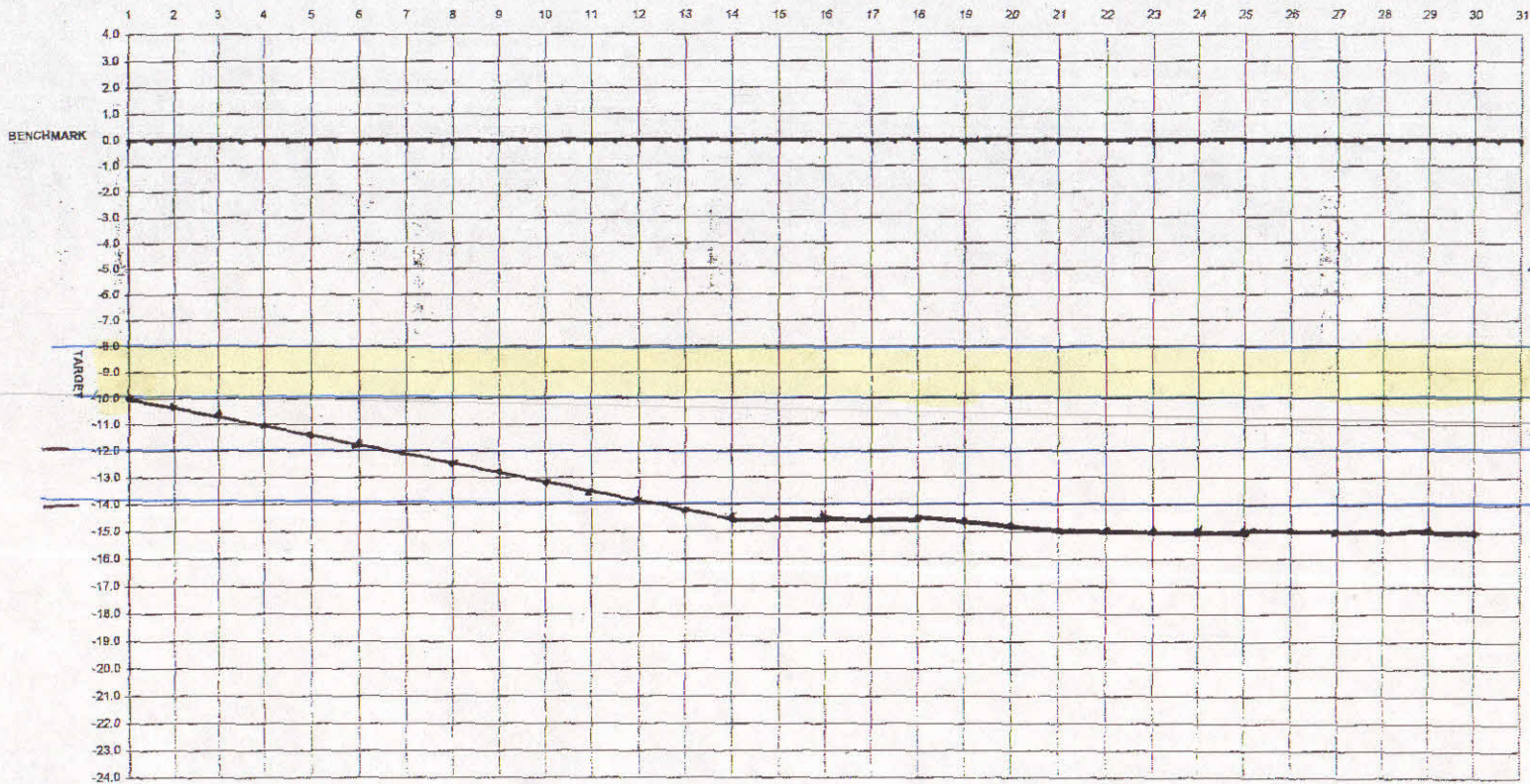
TOTAL
RAIN
2.81"

SEPTEMBER 09 LAKE LEVEL REPORT

DATE	1	2	3	4	5	6	7	8	9	10	11	12	13	14	15	16	17	18	19	20	21	22	23	24	25	26	27	28	29	30	31
LAKE-L	0	6	6	6	6	6	6	6	6	6	6	6	6	0	0	0	0	0	0	0	0	0	0	0	0	0	0	0	9	11	
LAKE-R	2	6	6	6	6	6	6	6	6	6	6	6	6	2	2	2	2	2	2	2	2	2	2	2	2	2	2	9	11		
POND	0	6	6	6	6	6	6	6	6	6	6	6	6	0	0	0	0	0	0	0	0	0	0	0	0	0	0	3	3		
RAIN	0	0	0	0	0	0	0	0	0	0	0.37	0.43	0.01	0	0	0	0	0	0	0	0	0	0	0	0	0	0	0	0	0	
LEVEL	10	10.5	10.5	11	11.5	12	12	12.5	12.5	13	13.5	14	14	14.5	14.5	14.5	14.5	14.5	14.5	14.5	15	15	15	15	15	15	15	15	15		

← MANNY ON VACATION →

Benchmark=478.6 ft. above mean sea level



TOTAL
RAIN
1.87"

SUMMER GOAL

WINTER GOAL

1.87"

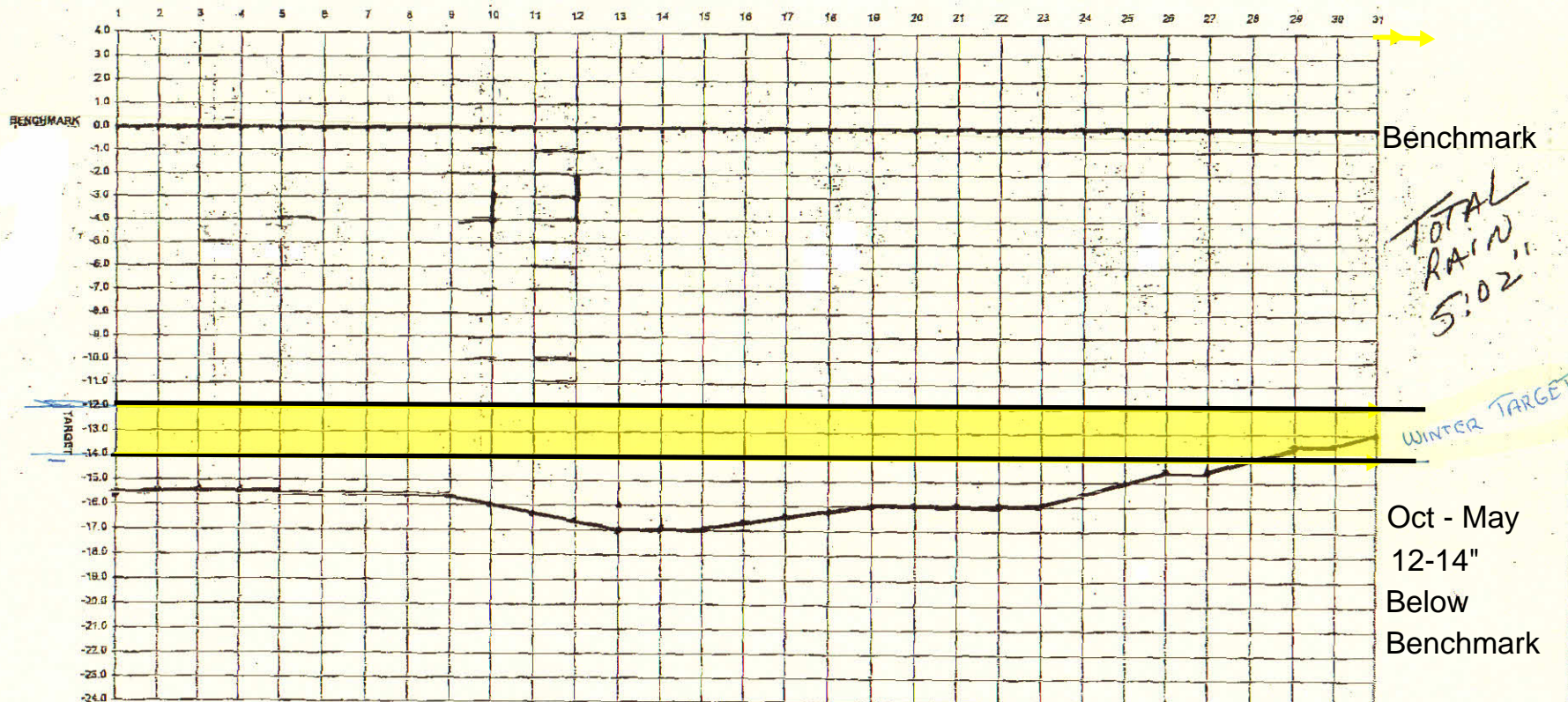
OCT → MAY 12-14 BELOW BENCHMARK
JUN → SEPT 8-10

OCTOBER 09

LAKE LEVEL REPORT

DATE	1	2	3	4	5	6	7	8	9	10	11	12	13	14	15	16	17	18	19	20	21	22	23	24	25	26	27	28	29	30	31
LAKE-L	13	13	15	15	15	15	15	17	17	17	17	17	0	0	0	0	0	0	0	0	0	0	0	0	0	0	0	0	0	0	
LAKE-R	13	13	15	15	15	15	15	17	17	17	17	17	2	2	2	2	2	2	2	2	2	2	2	2	2	2	2	2	2	2	
POND	3	3	8	8	8	8	8	10	10	10	10	10	0	0	0	0	0	0	0	0	0	0	0	0	0	0	0	0	0	0	
RAIN	0	0	.78	.01	0	0	.50	0	.11	.20	0	0	.27	0	.02	.17	0	.53	0	0	0	0	.08	1.41	0	0	.03	.83	0	0	.08
LEVEL	15.5	15.5	15.5	15.5	15.5	15.5	15.5	15.5	15.5	16	16.5	16.5	17	17	16.5	16.5	16	16	16	16	16	16	16	15.5	15	14.5	14.5	14	13.5	13.5	13

Benchmark=479.6 ft. above mean sea level

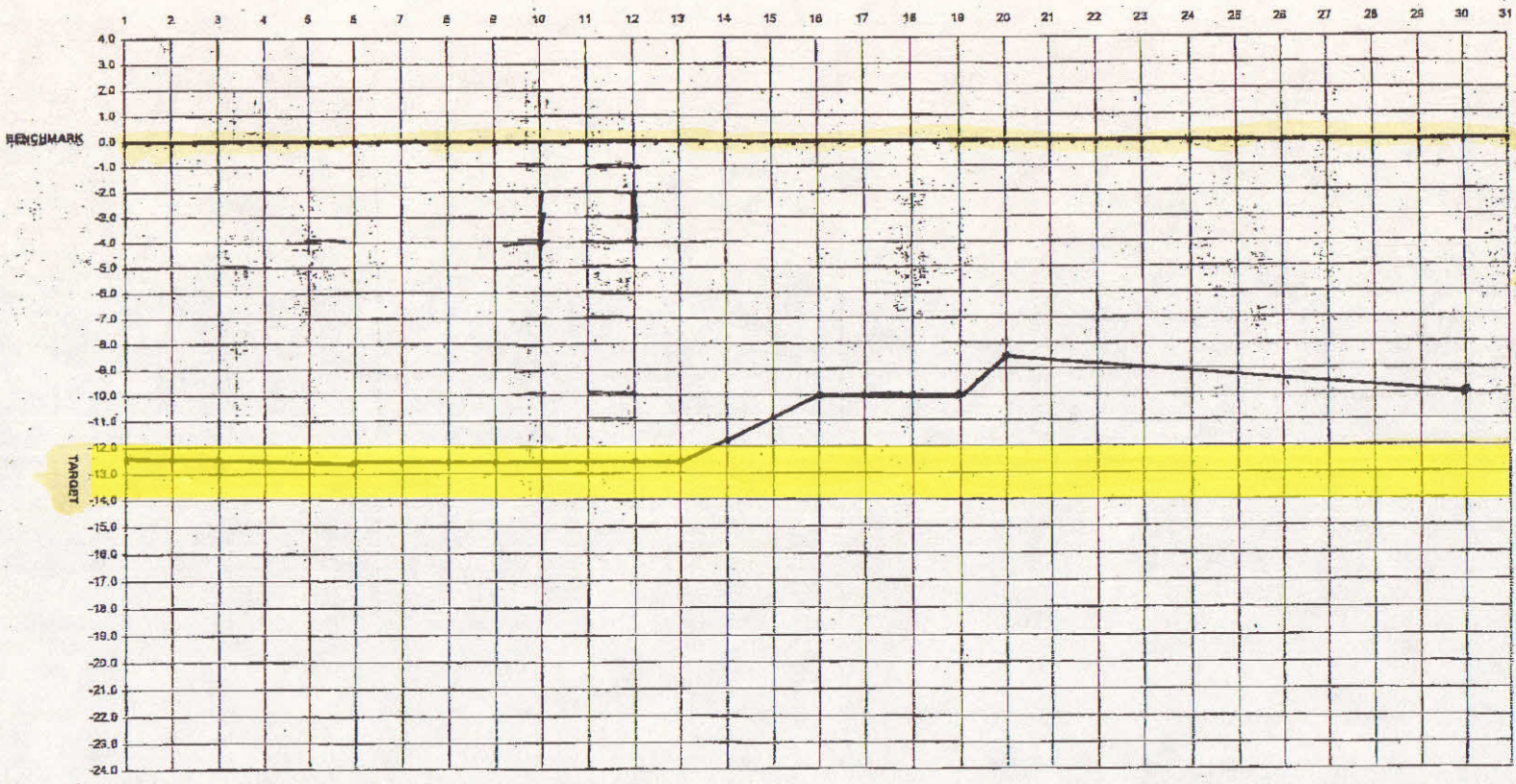


NOVEMBER 09

LAKE LEVEL REPORT

DATE	1	2	3	4	5	6	7	8	9	10	11	12	13	14	15	16	17	18	19	20	21	22	23	24	25	26	27	28	29	30	31
LAKE-L	0	0	0	0	0	0	0	0	0	0	0	0	0	0	4	6	6	10	12	12	12	12	12	12	12	12	12	12	12	12	
LAKE-R	2	2	2	2	2	2	2	2	2	2	2	2	2	2	4	6	6	10	12	12	12	12	12	12	12	12	12	12	12	12	
POND	0	0	0	0	0	0	0	0	0	0	0	0	0	0	0	0	0	4	7	7	7	7	7	7	7	7	7	7	7		
RAIN	.01	0	0	0	.04	.03	0	0	0	0	0	0	0	1.58	.06	0	0	0	0	.81	0	0	.10	0	.07	0	.39	.13	0	.19	
LEVEL	12.5	12.5	12.5	12.5	12.5	12.5	12.5	12.5	12.5	12.5	12.5	12.5	12.5	12	11	10	10	10	10	8.5	8.5	9	9	9	9	9.5	9.5	9.5	10	10	

Benchmark=479.6 ft. above mean sea level

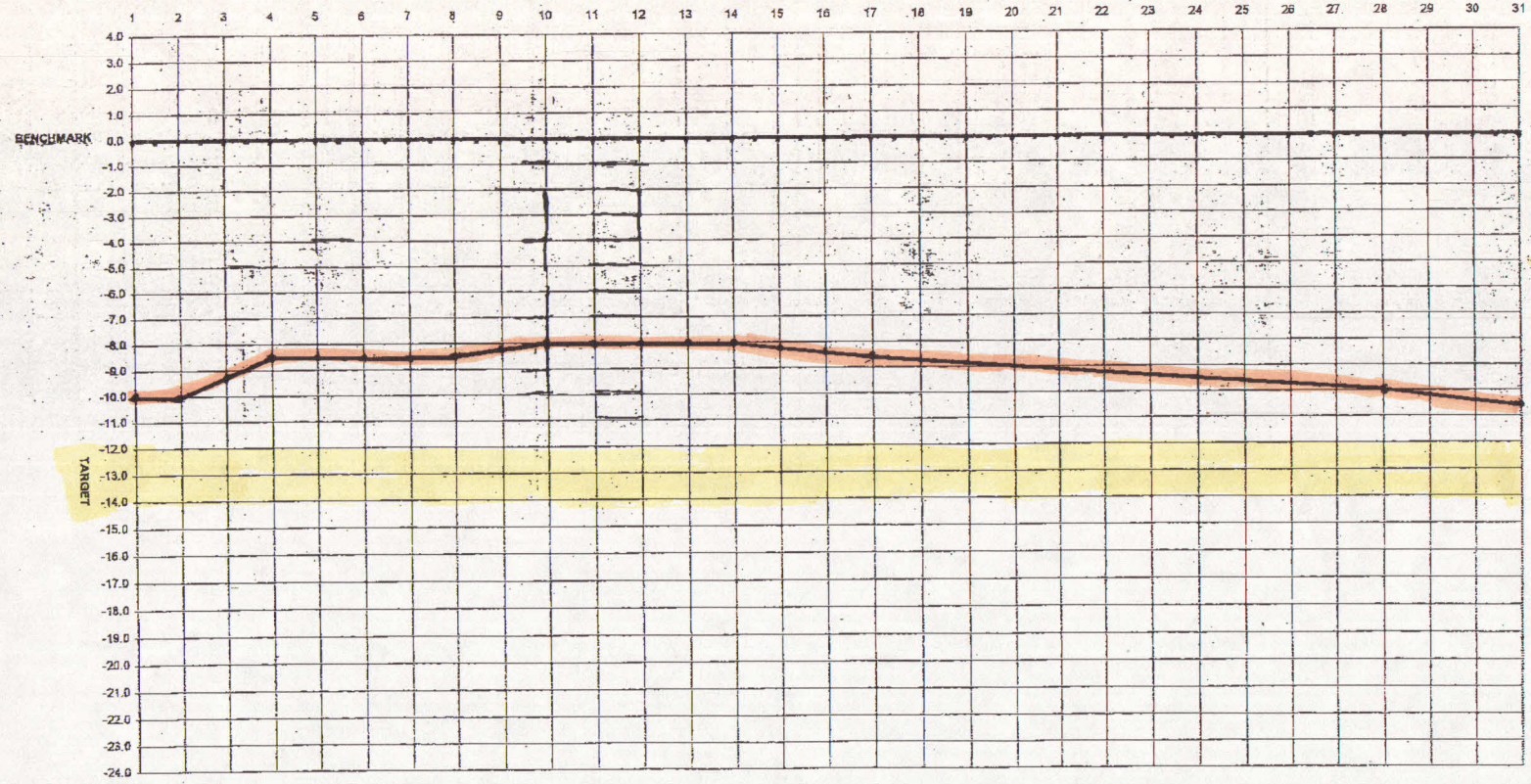


TOTAL RAIN
3.41"

December 09 LAKE LEVEL REPORT

DATE	1	2	3	4	5	6	7	8	9	10	11	12	13	14	15	16	17	18	19	20	21	22	23	24	25	26	27	28	29	30	31
LAKE-L	14	14	14	14	14	14	14	14	14	16	16	16	16	17	17	17	17	17	17	17	17	17	17	17	17	17	17	17	17	17	
LAKE-R	14	14	14	14	14	14	14	14	14	16	16	16	16	17	17	17	17	17	17	17	17	17	17	17	17	17	17	17	17		
POND	10	10	10	10	10	10	10	10	10	10	10	10	12	12	12	12	12	12	12	12	12	12	12	12	12	12	12	12	12		
RAIN	0	.11	.94	0	.17	0	0	0	1.45	0	0	0	1.70	0	0	0	.01	0	0	.28	0	0	0	0	0	.05	.79	.06	0	0	.12
LEVEL	10	10	-9	-8.5	-8.5	-8.5	-8.5	-8.5	-8.5	-8.0	-8	-8	-8	-8	-8	-8.5	-8.5	-8.5	-9	-9	-9	-9	-9.5	-9.5	-9.5	-9.5	-10	-10	-10	-10.5	-10.5

Benchmark = 479.6 ft. above mean sea level



TOTAL
RAIN
4.68"